



GIA®

Education Catalog

BANGKOK CAMPUS

2024



GIA (International) Co., Ltd.
MitrTown Office Tower, 19th Floor, Unit 1901-1902
944 Rama IV Road, Wangmai, Pathumwan
Bangkok, 10330 Thailand
T +66 2779 6100
www.bangkok.GIA.edu

Effective January 1, 2024 - December 31, 2024
Published October 31, 2023 Vol. 1.6

Contents

About GIA Education

President's Welcome Message.....	4
Mission and History.....	5
Accreditation and Licensing.....	6
Governance and Executive Management.....	7
GIA Education Advisory Boards.....	8
Faculty and Education Management.....	9

Campus Information

Facility, Classrooms and Equipment.....	10
School Calendar and Hours of Operation.....	11
Contacts and Resources.....	12

Programs and Classes

On Campus Programs.....	13
Graduate Gemologist®.....	14
Graduate Diamonds.....	16
Graduate Colored Stones.....	18
Applied Jewelry Professional.....	20
Jewelry Design.....	22
Lab Class Descriptions.....	24
Continuing Education.....	26

Enrollment Services

Admissions Policies and Procedures.....	27
Admission Requirements.....	27
English-Language Proficiency Exams.....	28
How to Apply.....	28
Proof of Graduation - Extenuating Circumstances.....	29
Nondiscrimination Policy.....	29
Residency and Applicant Screening.....	29
Prior Criminal Offenses.....	29
Payment Methods.....	29
Scholarships.....	30
International Visa Requirements.....	30
Transferability of Credits Earned at Our Institution.....	30
Transfer Credit Policy.....	30
Transferability of Coursework to another GIA Program.....	30
Tuition and Fees.....	31
Course Charges.....	31
Payment Due Dates.....	31
Additional Fees.....	32
Cancellation, Withdrawal and Refund Policies.....	33
Cancellation and Withdrawal of Enrollment.....	33
Refund Policy.....	33

Student Services

Student Services.....	34
Housing and Transportation.....	34
Food and Beverage.....	34
Health Care and Insurance.....	34
Disability Services and Accommodation.....	34

International Student Support.....	34
Internet Access	35
Career Services - Resources.....	35
Guest Speaker Series	35
Library and Learning Resources.....	35
GIA Alumni Collective™	36
Policies and Procedures	
Academic Policies and Procedures.....	37
Orientation Requirements	37
Attendance Policy.....	37
Clock Hours.....	37
Make-Up Hours.....	37
Homework Policy	38
Make-Up Work.....	38
Classroom Policies	38
Testing Policy	38
Grading System	38
Grading Policy	38
Academic Integrity Policy	39
Student Identity Verification	39
Academic Progress Policies	39
Advising and Probation	40
Leave of Absence Policy.....	40
Dismissal Policy.....	41
Appeal for Readmission	41
Graduation Requirements	42
Student Records.....	44
Transcripts.....	44
Administrative Policies	46
Student Code of Conduct and Standards of Behavior.....	46
Drug and Alcohol Abuse Prevention.....	47
Campus Safety and Security	47
Student Privacy Notice	48
Reasonable Accommodation.....	48
Complaint Policy and Procedure	49
Non-Retaliation Policy	50

President's Welcome Message

As a GIA graduate, I can tell you firsthand how earning a Graduate Gemologist diploma changed the course of my life. After I completed the program, I had a new set of invaluable skills I could use to shape my future. I started at Borsheims as a sales associate and appraiser and worked my way up to president and CEO. Now I have the privilege and honor of being the president and CEO of GIA.

Many parts of my story are unique, yet it has one element in common with that of many GIA alumni. A GIA education empowered me to achieve my most cherished dream and, in many ways, took me even further than I could have imagined. It is no exaggeration to say that a GIA education is the best investment I made for my future, and I'm confident that this will prove true for you, too.

From gemology to jewelry design, you'll find a variety of programs at GIA, each tailored to give you the expertise you need to get ahead in your field of choice. The knowledge you gain here can equip you for diverse careers, such as sales, manufacturing, designing, appraisal, auctioning and more. Our alumni hold influential positions all along the gem and jewelry industry pipeline, and with a GIA diploma, you can take your place among them.

With over 155,000 active alumni in 55 chapters globally, the GIA Alumni Collective™ continues to offer support and expertise even after you graduate. This invaluable network will provide you with lifelong friendships, industry knowledge and career connections.

Take some time to explore the Education Catalog and find the program that is right for you. Then get ready to dive into gem and jewelry brilliance and a world of opportunity.

We look forward to accompanying you on your professional journey and helping you to follow your passion.

Susan M. Jacques, GIA GG
GIA President and CEO



Susan M. Jacques, GIA President and CEO - ©GIA

Mission and History

Mission Statement

GIA's mission is to ensure the public trust in gems and jewelry by upholding the highest standards of integrity, academics, science and professionalism through education, research, laboratory services and instrument development.

Educational Philosophy

GIA education ensures the public's trust by delivering the highest-quality gem and jewelry education in the world. At the heart of GIA education are the following guiding principles:

Research

We design our educational programs based on the latest research and leading technology.

Relevance

We teach the necessary balance of theoretical knowledge and practical skills.

Leadership

We empower our graduates to become industry leaders who act ethically and honestly, meeting the occupational demands of the global gem and jewelry industry.

Accessibility

Our curriculum meets the various needs of all students by offering programs and courses across several learning methodologies without compromising quality.

Sustainability

Through ongoing support, our graduates are encouraged to grow continuously as confident, skilled and successful professionals. They are GIA's partners in ensuring the public's trust in gems and jewelry.

History

On February 15, 1931, former retail jeweler Robert M. Shipley and his wife, Beatrice, cashed in their savings to establish their long-held dream – the Gemological Institute of America.

When most jewelers knew little about the gems they traded, Shipley wanted to professionalize the industry through education, research and gemological instrumentation.

The Institute, initially based out of their home, offered mimeographed mail-order courses and provided gem-testing services using borrowed microscopes and other equipment. From these modest beginnings, GIA has become an institution that has educated more than 365,000 professionals worldwide, a prestigious laboratory grading the world's most important diamonds, the leading gemological research center and the creator of the 4Cs and the International Diamond Grading System™ – the worldwide standard for evaluating diamond quality.

Visit www.GIA.edu/gia-about to learn more about GIA history.

Accreditation and Licensing

GIA is a nonprofit, private, postsecondary educational institution incorporated for the purpose of promoting education and research in gemology, jewelry arts and related subjects.

Accreditation

Lab classes offered through the Bangkok campus are accredited by Distance Education Accrediting Commission (DEAC).

DEAC

1101 17th Street NW, Ste. 808

Washington, DC 20036 USA

+1 202 234 5100

www.deac.org

Licensing and Approvals

GIA's Bangkok office is registered with the Office of the Private Education Commission, Ministry of Education in Thailand.

Office of the Private Education Commission, Ministry of Education in Thailand

319 Chankasem Palace, Ratchadamnoen

Nok Road, Dusit, Bangkok 10300 Thailand

+66 2282 1000

<https://opec.go.th/>

Governance and Executive Management

Board of Governors

The GIA Board of Governors is the steward of the public interest. The board helps direct the strategy of the Institute to ensure that the mission and vision of GIA are followed in all decisions; that the reputation of GIA is preserved and continues to grow globally; and that the financial goals of the Institute are met. Each governor offers a unique perspective, based on their professional experience in retail, research, education, finance, law, manufacturing and other areas; several have extensive international experience.

Lisa A. Locklear - Chair

Executive Vice President and Chief Financial Officer,
Longeveron

Stephen F. Kahler - Vice Chair

Senior Advisor, Strategic Planning & Business
Development, Everidge

Dave Bindra

Vice President of Operations and Head of Acquisitions, B&B
Fine Gems

Lake Dai

Applied AI Professor, Carnegie Mellon University

Barbara Lee Dutrow, Ph.D.

Gerald Cire and Lena Grand Williams Alumni Professor in the
Department of Geology and Geophysics, Louisiana State
University

Kiko Harvey

Associate Senior Vice President of Audit Services,
University of Southern California

Susan M. Jacques

President and CEO, GIA

Robert Andrew 'Andy' Johnson

CEO, Diamond Cellar Holdings, LLC

Lawrence Ma

Chief Executive, Lee Heng Diamond Group
Founding President of the Diamond Federation of Hong Kong

Russell A. Mehta

Managing Director, Rosy Blue (India) Pvt. Ltd.

Thomas M. Moses

Executive Vice President and Chief Laboratory and Research
Officer, GIA

Jeffrey E. Post, Ph.D.

Curator-in-charge, National Gem and Mineral Collection,
Smithsonian National Museum of Natural History

Tammy Storino

Experienced global operations and finance leader

Marcus ter Haar

Experienced diamond industry executive

John W. Valley, Ph.D.

Charles R. Van Hise Professor, Department of
Geoscience University of Wisconsin – Madison

The list shown here is effective as of the publication date of this catalog; visit www.GIA.edu/gia-about-mission-governance-esg for an up-to-date listing.

Executive Management

GIA's executive staff constitutes a diverse group of highly experienced professionals from both inside and outside of the gem and jewelry industry. Responsible for carrying out the Institute's mission to protect and ensure the public trust globally, the executive team follows a strict code of ethics and seeks to infuse each initiative GIA undertakes with dedication and value-driven purpose.

Executive staff maintains daily operations for all areas of the Institute and promotes and continues the growth of GIA.

Visit www.GIA.edu/gia-about-mission-governance for the full list of GIA's executive management.

GIA Education Advisory Boards

The Education Committee of GIA's Board of Governors and the Program Advisory Committee (PAC) provide input and perspectives vital to our success, growth and improvement. Our PAC reviews curricula, course materials, equipment, facilities and student outcomes as a means of external review of our programs. Its members are qualified trade representatives who help us keep pace with current occupational trends and practices in the gem and jewelry industry.

Education Committee of the Board

Barbara Lee Dutrow, Ph.D., Chair

Gerald Cire and Lena Grand Williams Alumni Professor in the Department of Geology and Geophysics
Louisiana State University

Dave Bindra

Vice President of Operations and Head of Acquisitions, B&B Fine Gems

Kiko Harvey

Associate Senior Vice President of Audit Services,
University of Southern California

Susan M. Jacques

President and CEO, GIA

Robert Andrew 'Andy' Johnson

CEO, Diamond Cellar Holdings, LLC

Lisa A. Locklear

Executive Vice President and Chief Financial Officer,
Longeveron

Jeffrey E. Post, Ph.D.

Mineralogist and Curator-in-Charge of Gems and Minerals,
Smithsonian National Museum of Natural History

John W. Valley, Ph.D.

Charles R. Van Hise Professor, Department of Geoscience
University of Wisconsin - Madison

Ted Doudak

President, Riva Precision Manufacturing
Brooklyn, NY

Alexander Eblen

Vice President | Senior Specialist, Sotheby's
New York, NY

Rita Famulare

Owner, Famulare Jewelers
Carlsbad, CA

Alexandra Hart

Owner/Metals Artist and Designer Goldsmith, Alexandra Hart
San Diego, CA

Malcolm Koll

Owner, Charles Koll Jewelers
San Diego, CA

Gail Brett Levine

Executive Director, National Association of Jewelry Appraisers
Rego Park, NY

Christine Lopez

President and Co-Founder, Gem Surprise Box
San Diego, CA

Mary Todd McGinnis

Vice President, Ben Bridge Jewelers
Seattle, WA

Kevin Reilly

Senior Vice President, Platinum Guild International
New York, NY

Kapil Seth

Owner, Malhotra, Inc.
New York, NY

Ashwani (Sonny) K. Sethi

Owner, Tara & Sons
New York, NY

Lauren Stuller

Territory Manager, Customer Experience, Stuller, Inc.
Carlsbad, CA

Thom Underwood

Retired Former Owner, San Diego Gemological Laboratory
San Diego, CA

Kumud Wastrad

Director, High Jewelry - Diamond and Gemstone Acquisition,
Tiffany & Co.
New York, NY

Program Advisory Committee

Pamela Balodimas

Regional High Jewelry Gemology Advisor, Cartier/Richemont
New York, NY

Jean Francois Bibet

Workshop Director, Cartier/Richemont
New York, NY

Barry S. Block

President, The Jewelry Judge
Carle Place, NY

Latoya Boyd

Jewelry and Fashion Designer, Jeweler and Influencer,
Latoya Boyd Jewelry
San Diego, CA

Wade Clar

Director of Brand Development, Julez Bryant
Carlsbad, CA

Faculty and Education Management

Faculty

GIA's faculty meet or exceed applicable accreditation standards. Each has a minimum of three years of practical industry experience in the areas they teach, are trained in instructional methods and teaching skills and participate in ongoing professional development activities.

The list shown here is effective as of the publication date of this catalog. Please refer to our website at www.GIA.edu/gem-education/bangkok/faculty for an up-to-date listing of our faculty and qualifications.

Pitchaya Lopiti, Manager

MBA, Chulalongkorn University
BS Material Science, Srinakharinwirot University
GIA GG, AJP, Pearls Graduate

Ninnate Davis

MA Contemporary Jewelry Design, Silpakorn University
BS Material Science
GIA GG, AJP, Pearls Graduate

Mothana Kleebai

BS Science, Chiang Mai University
GIA AJP

Rich Jay Estrellado Sarmiento

MEd Educational Management Laguna College
BEd Elementary Education and Teaching

Education Management

Duncan Pay

Senior Vice President and Chief Academic Officer

Corey Rosso

Vice President, Academic Affairs

Kelly Yantzer

Vice President, Student Affairs

Claudia D'Andrea

Director, Operations, Thailand

Pitchaya Lopiti

Manager, Instruction, Thailand

Nattaya Sirisuttarom

Supervisor, Administration, Thailand

Kimberly Overlin

Director, Student Services and Dean of Students

Robyn Burrell

Director, Education Compliance and Financial Aid

Facility, Classrooms and Equipment

GIA's Bangkok campus is located at Mitrtown Office Tower, 19th Floor, Unit 1901-1902 944 Rama IV Road, Wangmai, Pathumwan Bangkok 10330. All On Campus and lab class offerings are held at this facility unless otherwise noted in the course schedule and the student's enrollment agreement. [Find the Bangkok Campus on Google maps; www.google.com/maps](#)

Facility

The facility is designed to support the Institute's mission by providing a safe and comfortable environment conducive to student learning and achievement. It covers 495 square meters and includes three classrooms, reception area, library, student canteen and administrative offices.

Wireless Internet access is available at no charge throughout the campus.

GIA has been designed and constructed in compliance with any applicable local laws and codes in effect at the time of design. All travel pathways, door openings, force ratings, reach ranges, sinks, lavatories, toilets and other elements subject to the code are designed and specified in compliance with these mandates.

To help ensure the safety and security of our students, employees and guests, the building has security officers on duty 24 hours a day, seven days a week with GIA security officers present during the school week. There is restricted/monitored access to the campus. A dedicated facilities department ensures the ongoing and routine maintenance of the facilities, equipment and replenishment of supplies.

Classrooms and Equipment

Classrooms can accommodate up to 15 students. Each classroom is amply equipped with the instruments and tools used in each subject area. Classroom equipment, tools and materials used are detailed within each program and class description in this catalog.

[See "On Campus Programs" on page 13](#)

[See "Lab Class Descriptions" on page 24](#)



Top: Student Reception; Middle: Student Canteen; Bottom: Library - ©GIA

School Calendar and Hours of Operation

2024 School Closure Dates

Classes are not in session on these dates; the campus will be closed with exceptions noted below.

Date	Holiday / Event
01 January 2024 (Monday)	New Year's Day
02 January 2024 (Tuesday)	Substitution for New Year's Eve
26 February 2024 (Monday)	Substitution for Makha Bucha Day
08 April 2024 (Monday)	Substitution for Chakri Memorial Day
15 April 2024 (Monday) through 16 April 2024 (Tuesday)	Songkran Festival
01 May 2024 (Wednesday)	National Labour Day
06 May 2024 (Monday)	Substitution for Coronation Day
22 May 2024 (Wednesday)	Visakha Bucha Day
03 June 2024 (Monday)	H.M. Queen Suthida Bajrasudhabimalalakshana's Birthday
22 July 2024 (Monday)	Substitution for Asarnha Bucha Day
29 July 2024 (Monday)	Substitution for H.M. King Maha Vajiralongkorn Phra Vajiraklaochaoyuhua's Birthday
12 August 2024 (Monday)	H.M. Queen Sirikit the Queen Mother's Birthday
14 October 2024 (Monday)	Substitution for H.M. King Bhumibol Adulyadej The Great Memorial Day
23 October 2024 (Wednesday)	Chulalongkorn Day
5 December 2024 (Thursday)	H.M. King Bhumibol Adulyadej the Great's Birthday
31 December 2024 (Tuesday)	New Year's Eve

Hours of Operation

The Bangkok campus is open Monday - Friday from 9:00 a.m. to 6:00 p.m. except for the scheduled school closures noted above.

Registration Period

GIA has one year-long academic term with continuous enrollment. Registration into On Campus programs is accepted up to two weeks prior to the first day of class. Registration into lab classes is accepted up to one week prior to the first day of class.

Class Schedules and Hours

Visit www.GIA.edu/gem-education/bangkok/schedule for up-to-date schedules.

On Campus Programs. An in-person orientation is scheduled prior to the start date from 10:00 a.m. to 1:00 p.m. Class hours are Monday through Friday from 9:30 a.m. to 4:30 p.m. There is a scheduled lunch break every day. Other breaks are given at each instructor's discretion. Class hours will be extended to 5:30 p.m. to accommodate for school closures. Students should expect to spend several hours each day outside of class on homework. There is no orientation for Applied Jewelry Professional; normal class hours are 9:30 a.m. to 5:30 p.m.

Lab Classes. Normal classroom hours are from 9:30 a.m. to 5:30 p.m. There is a scheduled lunch break every day. Other breaks are given at each instructor's discretion.

Contacts and Resources

Campus Contacts

Bangkok Campus

Admissions, registration, payment, cancellation, withdrawal, visas, housing, transportation, library, student workroom
+66 2779 6100 | giabkkedu@gia.edu

School Director

Disability accommodations, leave of absence, cancellation, withdrawal, probation, dismissal, complaints
+66 2779 6100 | bkkschooldirector@gia.edu

Resources

Alumni Collective™

Membership, benefits, events
Support available M-F 7:30 a.m. - 4:00 p.m. Pacific Time
+1 760 603 4145
<https://collective.gia.edu> | alumni@gia.edu

Blackboard Access (Current Students)

My GIA Education Portal: <https://education.gia.edu/>
Web: <https://blackboard.gia.edu>
Blackboard Learn App:



Web and App requires set-up of a new password.

Education Service Desk - Technical Support

Applicant Portal, My GIA Education Portal and Blackboard log-in, access and other technical issues
Support available M-F 7:30 a.m. - 4:00 p.m. Pacific Time
+1 760 603 4350 | www.GIA.edu/education-support

GIA Store

Optional books and instruments
Support available M-F 7:30 a.m. - 4:00 p.m. Pacific Time
+1 760 603 4200
<https://store.gia.edu> | giastore@gia.edu

Library - GIA Main Campus (Central)

Reference service, online resources
Support available M-F 7:30 a.m. - 4:00 p.m. Pacific Time
+1 760 603 4046 | library@gia.edu

My GIA Education Portal

View your academic, financial and student records; make payments, select a payment plan, submit forms, access courses in Blackboard (single sign-on)
<https://education.gia.edu/>

On Campus Programs

GIA offers full-time, instructor-led gemology and jewelry arts certificate and diploma programs through its On Campus division. Our faculty have an in-depth knowledge of gemstones, diamonds, equipment, CAD software and an impressive understanding of the jewelry industry. Our administrators are dedicated to helping you succeed; many are GIA alumni, so they understand what it is like to study full-time at a GIA campus.

The following pages provide a description, learning objectives, possible occupations, equipment and materials and the technology required to complete each program.

Program Name	Program Number	Clock Hours	Instructional Weeks	Program Length in Weeks (Calendar Duration; May vary with scheduled closures)	Description and Details
GEMOLOGY					
Graduate Gemologist®	GEM 2500	780	26	28	Page 14
Graduate Diamonds	GEM 2200	210	7	8	Page 16
Graduate Colored Stones	GEM 2300	570	19	20	Page 18
Applied Jewelry Professional™	GEM 1000	35	1	1	Page 20
JEWELRY ARTS					
Jewelry Design	JMA 370	270	9	9	Page 22



Students use gemological equipment to identify colored stones - ©GIA

Graduate Gemologist®



Description

The Graduate Gemologist diploma program delivers a comprehensive gemology education covering both diamonds and colored stones. Topics covered include historical and current industry information, practices throughout the supply chain and relevant diamond and colored stone source information. Students learn the science behind diamond and colored stone formation, appearance and identification, how to describe color by hue, tone and saturation and how to evaluate diamond and colored stone quality factors. Students apply classroom knowledge through in-depth, practical application of the GIA International Diamond Grading System™ and the GIA Colored Stone Grading System. Using professional gemology equipment, students identify diamonds, colored stones and simulants; distinguish natural, treated and laboratory-grown diamonds and gemstones; and grade diamonds and colored stones.

Learning Objectives

- Describe the components of the diamond and colored stone supply chain
- Explain the science of diamond and colored stone formation, appearance and identification
- Describe how quality, rarity, color and market factors affect gem value
- Grade diamonds using the 4Cs (color, clarity, cut and carat weight)
- Identify diamonds, colored stones and simulants
- Grade colored stones using the GIA Colored Stone Grading System
- Detect treated and laboratory-grown gemstones
- Identify the relationship between proportions and diamond weight
- Describe the GIA International Diamond Grading System™
- Describe the GIA Colored Stone Grading System

What you will Earn

- GIA Graduate Gemologist Diploma
- GIA Graduate Diamonds Diploma
- GIA Graduate Colored Stones Diploma

Occupations May Include

Appraiser, Auction House Jewelry Specialist, Colored Stone Buyer, Diamond Buyer, Diamond Sorter/Grader, Estate Jewelry Dealer, Staff Gemologist, Inventory Control Specialist, Jewelry Business Owner, Jewelry Buyer, Jewelry Sales Professional, Lab and Research Professional, Merchandiser, Pawnbroker, Retailer, Wholesaler

Contact us at giabkkedu@gia.edu for more information.

Details

Graduate Gemologist	
Program Number	GEM 2500
Clock Hours	780 clock hours / 26 instructional weeks
Program Length (Calendar Duration)	28+ calendar weeks (length may vary with scheduled breaks)
Total Charges	See "Tuition and Fees" on page 31

Schedules and Class Hours

Visit www.GIA.edu/gem-education/bangkok/schedule for schedules. Normal class hours are 9:30 a.m. to 4:30 p.m. Students will be notified in advance if hours will be modified.

Equipment and Materials

Each classroom is equipped with an electronic balance with hydrostatic unit, GIA DiamondDock™, GIA iD100®, UV lamp with viewing cabinet, desktop prism spectroscope, color filter and fiber-optic light unit. Each student workstation has a binocular microscope with an overhead light source, diffuser plate and monochromatic light source. As part of their course materials, students receive a 10x loupe, tweezers, gem cloth, pointer probe, plotting pens, table gauge, crown angle card, color grading cards, GIA pad folio, refractometer with polarizing filter and removable magnifying eyepiece, refractive index (RI) liquid, polariscope with magnifying eye piece and an optic figure sphere, dichroscope, handheld spectroscope, pinpoint incandescent light source and lab manuals. Students may download and save PDF copies of the textbooks prior to the course end date.

Technology Requirements

To access the My GIA Education Portal and the Blackboard LMS, students are required to have a valid email address that is not shared with others (for security purposes). Students must also have access to a computer, tablet or mobile device with a stable Internet connection that meets the following requirements.

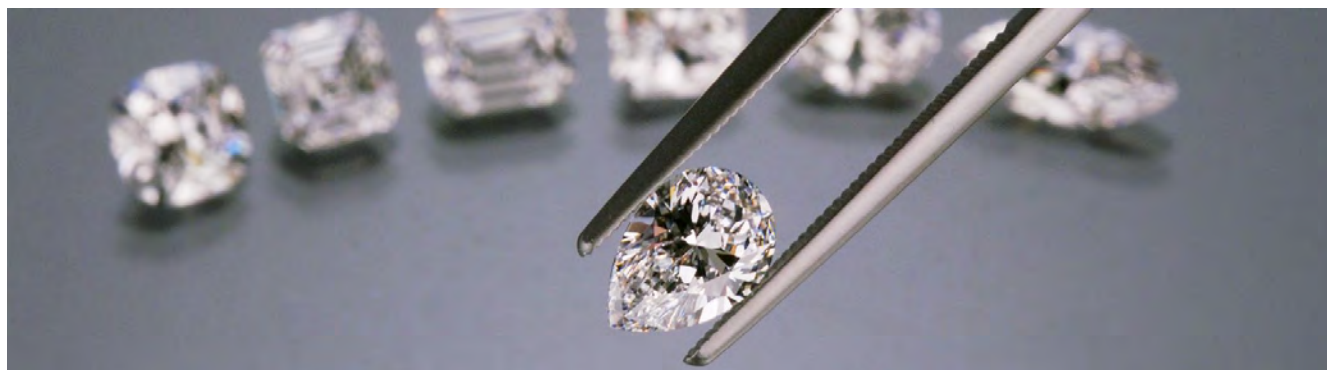
- Operating system:
 - Computers - Windows 8 or higher, MacOS 11 or higher
 - Tablets and mobile devices - Most recent version of iOS or Android
- Supported Browsers: Most recent version of Firefox, Chrome, Edge, or Safari
- Screen resolution: 1280 x 720 or above (recommended to access online curriculum)
- Cookies allowed and pop-up blockers disabled
- Adobe Acrobat Reader: most recent version (free at <https://get.adobe.com/reader>)

Requirements subject to change; students will be given advanced notice of changes.



GIA microscope; rough and polished amethyst - ©GIA

Graduate Diamonds



Description

The GIA Graduate Diamonds course introduces the foundational skills and knowledge required to make informed decisions when grading, buying and selling diamonds. Students learn the science behind diamond formation, appearance and identification, and discover historical and current diamond industry information and practices throughout the supply chain. Coursework includes the application of the GIA International Diamond Grading System™ to assess the 4Cs – color, clarity, cut and carat weight – and how they affect diamond value. Students use professional diamond grading equipment to examine and plot diamond quality characteristics; grade diamonds according to the 4Cs; detect common diamond treatments; identify diamond simulants. Additionally, students learn the science behind laboratory-grown diamond formation, what tools can be helpful in identification of lab-grown diamonds and when to submit to a laboratory for further testing.

Learning Objectives

- Describe the components of the diamond supply chain
- Explain the science of diamond formation, appearance and identification
- Grade diamonds using the 4Cs (color, clarity, cut and carat weight)
- Identify the relationship between proportions and diamond weight
- Describe the GIA International Diamond Grading System™
- Detect treated and laboratory-grown gemstones
- Describe how quality, rarity, color and market factors affect gem value
- Identify the relationship between proportions and diamond weight

What You Earn

GIA Graduate Diamonds Diploma

Occupations May Include

Diamond Buyer, Diamond Grader, Diamond Assorter, Jewelry Business Owner, Jewelry Sales Professional, Retailer, Auction House Jewelry Specialist, Wholesaler

Contact us at giabkkedu@gia.edu for more information.

Details

Graduate Diamonds	
Program Number	GEM 2200
Clock Hours / Instructional Weeks	210 clock hours / 7 instructional weeks
Program Length (Calendar Duration)	8+ calendar weeks (length may vary with scheduled breaks)
Total Charges	See "Tuition and Fees" on page 31

Schedules and Class Hours

Visit www.GIA.edu/gem-education/bangkok/schedule for schedules. Normal class hours are 9:30 a.m. to 4:30 p.m. Students will be notified in advance if hours will be modified.

Equipment and Materials

Each classroom is equipped with a GIA DiamondDock™, GIA iD100 and a UV lamp with viewing cabinet. Each student workstation has a binocular microscope with an overhead light source. As part of their course materials, students receive a 10x loupe, tweezers, gem cloth, pointer probe, plotting pens, table gauge, crown angle cards, color grading cards, GIA pad folio and a lab manual. Students may download and save PDF copies of the textbooks prior to the course end date.

Technology Requirements

To access the My GIA Education Portal and the Blackboard LMS, students are required to have a valid email address that is not shared with others (for security purposes). Students must also have access to a computer, tablet or mobile device with a stable Internet connection that meets the following requirements.

- Operating system:
 - Computers - Windows 8 or higher, MacOS 11 or higher
 - Tablets and mobile devices - Most recent version of iOS or Android
- Supported Browsers: Most recent version of Firefox, Chrome, Edge, or Safari
- Screen resolution: 1280 x 720 or above (recommended to access online curriculum)
- Cookies allowed and pop-up blockers disabled
- Adobe Acrobat Reader: most recent version (free at <https://get.adobe.com/reader>)

Requirements subject to change; students will be given advanced notice of changes.



Rough and polished diamonds - ©GIA

Graduate Colored Stones



Description

The Graduate Colored Stones diploma program blends theoretical knowledge with practical application. Topics include gemstone formation, properties, sources and the colored stone supply chain. Students learn how to describe color by hue, tone and saturation, which gemstones are commercially important and what factors affect gem price and availability. The course describes the general observation process, standard gemological tests and equipment and when advanced laboratory testing and instrumentation is needed for accurate identification. Using professional gemology equipment, students identify diamonds, colored stones and simulants; distinguish natural, treated and laboratory-grown diamonds and colored stones; and grade colored stones.

Learning Objectives

- Describe the components of colored stone supply chain
- Explain the science of colored stone formation, appearance and identification
- Describe how quality, rarity, color and market factors affect gem value
- Identify diamonds, colored stones and simulants
- Grade colored stones using the GIA Colored Stone Grading System
- Detect treated and laboratory-grown gemstones
- Describe the GIA Colored Stone Grading System

What You Earn

GIA Graduate Colored Stones Diploma

Occupations May Include

Colored Stone Grader, Colored Stone Sorter, Appraiser, Auction House Jewelry Specialist, Colored Stone Buyer, Estate Jewelry Dealer, Jewelry Business Owner, Jewelry Buyer, Jewelry Sales Professional, Pawnbroker, Retailer, Wholesaler

Contact us at giabkkedu@gia.edu for more information.

Details

Graduate Colored Stones	
Program Number	GEM 2300
Clock Hours / Instructions Weeks	570 clock hours / 19 instructional weeks
Program Length (Calendar Duration)	20+ calendar weeks (length may vary with scheduled breaks)
Total Charges	See "Tuition and Fees" on page 31

Schedules and Class Hours

Visit www.GIA.edu/gem-education/bangkok/schedule for schedules. Normal class hours are 9:30 a.m. to 4:30 p.m. Students will be notified in advance if hours will be modified.

Equipment and Materials

Each classroom is equipped with an electronic balance with hydrostatic unit, UV lamp with viewing cabinet, desktop prism spectroscope, color filter and a fiber-optic light unit. Each student workstation has a binocular microscope with an overhead light source, diffuser plate and monochromatic light source. As part of their course materials, students receive a refractometer with polarizing filter and removable magnifying eyepiece, refractive index (RI) liquid, polariscope with magnifying eye piece and optic figure sphere, dichroscope, handheld spectroscope, pinpoint incandescent light source, tweezers and lab manuals. Students may download and save PDF copies of the textbooks prior to the course end date.

Technology Requirements

To access the My GIA Education Portal and the Blackboard LMS, students are required to have a valid email address that is not shared with others (for security purposes). Students must also have access to a computer, tablet or mobile device with a stable Internet connection that meets the following requirements.

- Operating system:
 - Computers - Windows 8 or higher, MacOS 11 or higher
 - Tablets and mobile devices - Most recent version of iOS or Android
- Supported Browsers: Most recent version of Firefox, Chrome, Edge, or Safari
- Screen resolution: 1280 x 720 or above (recommended to access online curriculum)
- Cookies allowed and pop-up blockers disabled
- Adobe Acrobat Reader: most recent version (free at <https://get.adobe.com/reader>)

Requirements subject to change; students will be given advanced notice of changes.



Tanzanite crystal and polished gem.
Courtesy: Isle of Gems Co. Ltd./Peter Pereira

Applied Jewelry Professional



Description

The Applied Jewelry Professional™ (AJP®) diploma program covers topics including jewelry designs, setting styles, jewelry care and other content that will support the product knowledge of current industry professionals. Students learn basic information about diamonds, rubies, emeralds, sapphires and the GIA clarity grading system. Other subjects of study include how modern technology is changing the way diamonds are cut, the qualities of precious metals, major jewelry manufacturing methods and the important activities involved in the operation of a retail jewelry store. To enable effective product conversations, examples are provided on how to translate jewelry features into benefits and how to communicate the 4Cs of diamond value to customers. The AJP coursework provides clear and concise information that can be immediately implemented on the job.

Learning Objectives

- Describe the GIA International Diamond Grading System™
- Explain how the 4Cs (color, clarity, cut and carat weight) affect a diamond's value
- Explain the differences between treated, laboratory-grown and imitation stones to sell with full disclosure
- Understand the steps of the jewelry sales process
- Translate jewelry design, style and manufacturing features into benefits
- Convey the romance, lore and characteristics of the most popular colored gemstones

What You Earn

GIA Applied Jewelry Professional Diploma

Occupations May Include

Jewelry Sales Professional, Jewelry Assistant Manager, Jewelry Consultant, Jewelry Service Advisor, Assistant Inventory Manager, Television Shopping Host, Pawnbroker

Contact us at giabkkedu@gia.edu for more information.

Details

Applied Jewelry Professional	
Program Number	GEM 1000
Clock Hours / Instructional Weeks	35 hours / 1 instructional week
Program Length (Calendar Duration)	1+ calendar week (length may vary with scheduled breaks)
Total Charges	See "Tuition and Fees" on page 31

Schedules and Class Hours

Visit www.GIA.edu/gem-education/bangkok/schedule for schedules. Normal class hours are 9:30 a.m. to 5:30 p.m. Students will be notified in advance if hours will be modified.

Technology Requirements

To access the My GIA Education Portal and the Blackboard LMS, students are required to have a valid email address that is not shared with others (for security purposes). Students must also have access to a computer, tablet or mobile device with a stable Internet connection that meets the following requirements.

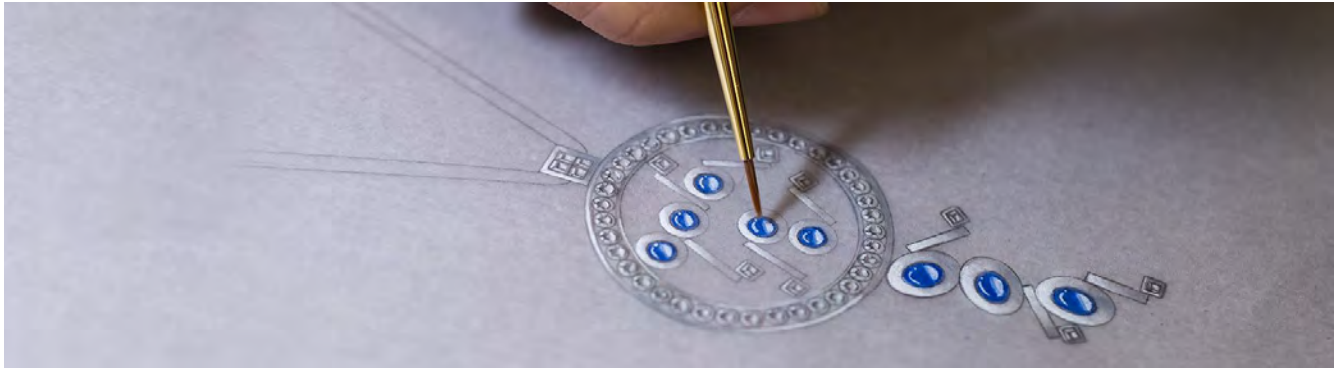
- Operating system:
 - Computers - Windows 8 or higher, MacOS 11 or higher
 - Tablets and mobile devices - Most recent version of iOS or Android
- Supported Browsers: Most recent version of Firefox, Chrome, Edge, or Safari
- Screen resolution: 1280 x 720 or above (recommended to access online curriculum)
- Cookies allowed and pop-up blockers disabled
- Adobe Acrobat Reader: most recent version (free at <https://get.adobe.com/reader>)

Requirements subject to change; students will be given advanced notice of changes.



Rough and polished opal. Courtesy: Cenki Thomas

Jewelry Design



Description

The Jewelry Design certificate program provides students with the fundamental knowledge of design theory and the technical hand-rendering skills commonly employed in jewelry design. Students acquire a working knowledge of jewelry artistry. Skills taught include illustrating the shape, form and texture of metal; working with drafting tools; and rendering yellow and white metals as well as a range of faceted and cabochon gemstones and pearls. By the completion of the program, students will have a portfolio of class projects and custom designs ready for presentation to potential clients and employers.

Learning Objectives

- Demonstrate ability to create designs based on sources of inspiration
- Describe jewelry design theory and artistry
- Demonstrate rendering skills with graphite, colored pencils and water color paints
- Illustrate the shape, form and texture of metal
- Render faceted and cabochon gems, pearls and colored stones
- Demonstrate traditional drafting techniques used for enhanced rendering
- Develop and refine motifs used for jewelry design

What You Earn

GIA Jewelry Design Certificate

Occupations May Include

Jewelry Designer, Custom Designer, Hand Renderer, Sales Associate, Technical Designer

Contact us at gjabkkedu@gia.edu for more information.

Details

Jewelry Design	
Program Number	JMA 370
Clock Hours / Instructions Weeks	270 clock hours / 9 instructional weeks
Program Length (Calendar Duration)	9+ calendar weeks (length may vary with scheduled breaks)
Total Charges	See "Tuition and Fees" on page 31

Schedules and Class Hours

Visit www.GIA.edu/gem-education/bangkok/schedule for schedules. Normal class hours are 9:30 a.m. to 4:30 p.m. Students will be notified in advance if hours will be modified.

Equipment and Materials

Each student workstation is equipped with two flat-screen monitors for close-up viewing of live instructor demonstrations. As part of their course materials, students receive a design toolkit containing a variety of paints, pencils, brushes, templates, papers and vellum and printed course materials.

Technology Requirements

To access the My GIA Education Portal and the Blackboard LMS, students are required to have a valid email address that is not shared with others (for security purposes). Students must also have access to a computer, tablet or mobile device with a stable Internet connection that meets the following requirements.

- Operating system:
 - Computers - Windows 8 or higher, MacOS 11 or higher
 - Tablets and mobile devices - Most recent version of iOS or Android
- Supported Browsers: Most recent version of Firefox, Chrome, Edge, or Safari
- Screen resolution: 1280 x 720 or above (recommended to access online curriculum)
- Cookies allowed and pop-up blockers disabled
- Adobe Acrobat Reader: most recent version (free at <https://get.adobe.com/reader>)

Requirements subject to change; students will be given advanced notice of changes.



Hand-rendered necklace - ©GIA

Lab Class Descriptions

Students enrolled in GIA's Online Division through the main (central) campus in Carlsbad, California earn their online gemology diplomas by enrolling in and completing a required combination of self-paced online courses and instructor-led, lab classes. Lab classes offered by the Bangkok campus are listed below. Visit www.GIA.edu/gem-education/online-division/overview for more information.

GEM 149L Pearl Grading Lab

The GIA Pearl Grading Lab guides students through the grading and classification of pearls using GIA's 7 Pearl Value Factors™. Through practical coursework, students evaluate size, shape, color, luster, surface, nacre thickness and matching.

Students must pass a two-stone assessment to complete the class successfully. Classrooms contain a pearl gauge and other instruction aids. Each student workstation includes a daylight equivalent light source and a pearl grading master set with an informational keycard. Students receive a lab manual, color reference chart, gem cloth and pencil as part of the course materials.

- **Prerequisites:** None
- **Hours / Duration:** 7 clock hours / 1 day
- **What you earn:** Letter of Completion

GEM 220L Colored Stone Grading Lab

The Colored Stone Grading Lab learn how to grade the color, clarity and cut quality of a wide range of colored stones through practical coursework. Topics include how to describe a gem's color by hue, tone and saturation and how to evaluate gems using the GIA Colored Stone Grading System.

Students must pass a two-stone final exam to complete the class successfully. Each student workstation includes either a binocular microscope or daylight equivalent light source and 10x loupe. Students receive a lab manual, color description system pamphlet, tweezers, gem cloth, pinpoint incandescent light source, color grading card and pencil as part of the course materials.

- **Prerequisites:** None
- **Hours / Duration:** 21 clock hours / 3 days
- **What you earn:** Letter of Completion

GEM 230L Diamond Grading Lab

The Diamond Grading Lab introduces students to the procedures used to grade diamonds according to GIA's International Diamond Grading System™. Using round brilliant cut diamonds on the D-Z color scale, students apply their knowledge by assigning color, clarity and cut grades, determining proportions and weight and documenting fluorescence. Students also learn how to identify and plot clarity characteristics and receive hands-on practice separating natural diamond from common simulants.

Students must pass a two-stone final exam to complete the class successfully. Classrooms contain a GIA DiamondDock™ and UV lamp with viewing cabinet. Each student workstation has a binocular microscope with a daylight equivalent overhead light source, LED light, calculator and diamond grading tray. Students receive a lab manual, tweezers, 10X loupe, pointer probe, gem cloth, plotting pen set, table gauge, crown angle card, color grading card and pencil as part of the course materials.

- **Prerequisites:** None
- **Hours / Duration:** 35 clock hours / 5 days
- **What you earn:** Letter of Completion



Diamond Grading Lab students assess a diamond's clarity using a 10X jeweler's loupe - ©GIA

GEM 240L Gem Identification Lab

The Gem Identification Lab introduces students to the general observation process and the operation of the gemological equipment used to test and identify colored stones. Instructors demonstrate key tests and coach students on effective testing procedures. Students use gemological instruments to practice identifying natural and laboratory-grown gemstones, imitations and assembled stones.

Students must pass an instrumentation exam to complete the class successfully. Classrooms contain a table model prism spectroscope, color filter, fiber optic light, UV lamp with viewing cabinet and a utility lamp. Each student workstation has a binocular microscope with a daylight equivalent overhead light source, handheld spectroscope, dichroscope, refractometer, refractive index (RI) liquid, diffuser plate, polariscope, optic figure sphere and monochromatic light source. Students receive a lab manual, color description system pamphlet, tweezers, gem cloth, pinpoint incandescent light source, color grading card and pencil as part of the course materials.

- **Prerequisites:** None
- **Hours / Duration:** 35 clock hours / 5 days
- **What you earn:** Letter of Completion

In this class, students use RI (refractive index) liquid which contains diiodomethane also known as Methylene Iodide. [See "Student Notification of Classroom Chemical Usage" on page 47](#) for more information.



Gem Identification Lab students learn the proper use of gemological equipment like a polariscope (top) and dichroscope (bottom) - ©GIA

Continuing Education

GIA's continuing education offerings deliver skills and knowledge on topics, research and trends that are relevant to today's industry. Designed for gem and jewelry professionals who wish to further their knowledge or aficionados looking to explore their passion, professional development offerings are a fast way to become familiar with a target topic or issue and stay current with industry research and trends. The classes listed here are offered by the Bangkok campus. The GIA Alumni Collective™ also offers continuing education offerings on a variety of gem and jewelry topics. Learn more at www.GIA.edu/gia-alumni/continuing-education

Continuing education offerings are not intended to prepare individuals for entry-level employment and do not fall under the approval of the Distance Education Accrediting Commission (DEAC).

JMA 330L Quick Design

Increase your professionalism by quickly and efficiently learning the basic skills in jewelry design presentations. Through this hands-on, practical class, you learn to communicate designs effectively with bench jewelers, colleagues and customers. You are guided how to make realistic presentations with colored pencils, stencils and equipment which are yours to keep. These professional design illustration techniques help you translate ideas into reality.

Duration: 5 days

What you earn: Letter of Attendance

Cost: 30,000 THB due at the time of registration

Admissions Policies and Procedures

Admission Requirements

To be admitted into programs or classes at GIA's Bangkok campus, applicants must meet the following requirements: i) have a high school diploma or the equivalent, ii) be at least 18 years of age, iii) have the ability to read and write in English at the level of a graduate of a secondary school where English is the primary language of instruction.

All programs are taught in English. GIA does not offer English as a second language (ESL) instruction.

Required Documents

Applicants must provide the following documents along with their completed application. All documents must be in English or accompanied by an English-language translation provided by a translation service.

☑ Identification

- Thai residents must provide a copy of a valid Thai Identity Card or Thai Resident Certificate.
- Applicants who are not a Thai resident must provide a passport copy (all paged that have been used).

☑ Proof of Graduation

Copy of your diploma or degree, or an official transcript showing the graduation date for ONE of the following:

- High school / high school equivalency diploma
- Undergraduate or graduate degree from a college or university

☑ Name Change Documentation (if applicable)

If your legal name differs from the one on a required admission document, you must show proof of a legal name change that ties all of your documents together. Provide a copy of a court-issued document showing your former and new legal name, such as a marriage certificate, divorce decree, or other court-issued document.

☑ Proof of English-language Proficiency

Applicants whose citizenship or proof of graduation is from a country where English is the official language* and all lab class applicants are exempt from this requirement. All other On Campus applicants must provide documentation for ONE of the following.

- Completed at least 3 years of study in secondary or post-secondary education with English as the medium of instruction.
 - Provide a letter on the school's letterhead that states how many years you studied and that English was the medium of instruction.
 - The letter must be signed and dated by the school's dean, director, or headmaster.
- Met the minimum requirement on an approved English-language proficiency exam. See "[English-Language_Proficiency_Exams](#)" on page 28

☑ Purpose of Attending and Personal History Forms

"Purpose of Attending the Course" and "Personal History" forms. Contact gjabkkedu@gia.edu for these forms; original must be submitted to GIA by mail or in person.

* **English-language Countries.** Anguilla, Antigua and Barbuda, Australia, Bahamas, Barbados, Belize, Bermuda, Botswana, Cameroon, Canada (except Quebec), Cayman Islands, Denmark, Dominica, Fiji, Finland, Gambia, Ghana, Gibraltar, Grenada, Guyana, Ireland, Jamaica, Kenya, Lesotho, Liberia, Malawi, Malta, Mauritius, Montserrat, Namibia, Netherlands, New Zealand, Nigeria, Norway, Papua New Guinea, Rwanda, Scotland, Seychelles, Sierra Leone, Singapore, Solomon Islands, South Africa, St. Kitts and Nevis, St. Lucia, St. Vincent and the Grenadines, Swaziland, Sweden, Tanzania, Tonga, Trinidad and Tobago, Turks and Caicos Islands, Uganda, United Kingdom, Vanuatu, Virgin Islands, Wales, Zambia, Zimbabwe (Field Listing - Languages, The World Factbook. Central Intelligence Agency)

English-Language Proficiency Exams

Applicants who are required to take an English-language proficiency exam must meet the minimum requirement for ONE of these approved exams or courses.

Testing / Language Center	Minimum Requirement
Test of English as a Foreign Language (TOEFL®); www.ets.org/toefl.html GIA's TOEFL code is 9028	Overall band score of 8 on TOEFL Essentials™ or 61 on TOEFL iBT® or 500 on paper-based TOEFL <i>The Institutional TOEFL (ITP) test is not accepted.</i>
International English Language Testing System (IELTS™); www.ielts.org	Overall band score of 6.0 on IELTS Academic
International Test of English Proficiency (iTEP); www.itepexam.com	Level 4 on iTEP Academic-Plus
Pearson Test of English (PTE); www.pearsonpte.com	50 or higher on PTE Academic
Cambridge English Exams; www.cambridgeenglish.org/exams-and-tests	Overall Cambridge English Scale score of 173 on B2 First, C1 Advanced or C2 Proficiency
ELS Language Centers; www.els.edu	Successfully complete a level 109 or higher course
Duolingo English Test; www.englishtest.duolingo.com	Score of 105 or higher

TOEFL®, IELTS™, iTEP and PTE academic scores are valid for two years from the date of the examination.

For ELS Language Centers, request your official academic record from the campus you attended and submit to GIA; certificates are not accepted.

How to Apply

To apply for admission:

1. Confirm that you meet all admission requirements listed on [page 27](#)
2. Select your program and intended start date.
 - Visit www.GIA.edu/gem-education/bangkok/schedule for class schedules.
3. Determine your financial obligation. See "Tuition and Fees" on [page 31](#)
4. Gather the required documents listed on [page 27](#)
5. Create an account and sign in to GIA's applicant portal at www.GIA.edu/applynow
6. Follow the instructions online to complete your application and upload your supporting documentation.
7. Review and submit your application.

A GIA admissions representative will review your application to ensure you have met all requirements and notify you of your acceptance or denial of admission.

After you have been accepted for admission, you will receive information on how to log into the My GIA Education Portal. A registration confirmation and an enrollment agreement will be sent to your email address on record. The agreement includes course details, financial obligations, important policies, disclosures and notices.

Application Deadline and Waitlists

Applications must be received no later than two weeks before your intended start date for On Campus programs and no later than one week prior to the start of a lab class. Classes typically reach capacity two to four months in advance, so apply early. Students are registered on a first-come, first-served basis. If a class reaches capacity, students are placed on a waitlist and notified if a seat becomes available.

Proof of Graduation - Extenuating Circumstances

An applicant who meets all admission requirements but is unable to obtain proof of graduation after exhausting all avenues may submit a petition of exception to GIA's admissions committee. For example, a student from a war-torn country whose school no longer exists. The student may be approved to attest to the fact that they have obtained a high school diploma or its equivalent.

Nondiscrimination Policy

It is GIA's policy not to engage in discrimination against, or harassment of any student enrolled in or seeking enrollment in GIA on the basis of race, color, national or ethnic origin, ancestry, religion, creed, gender, age, disability, medical condition, pregnancy or parental status, marital status, sex, sexual orientation, veteran status, gender identity, caste, union membership, political affiliation, physical appearance, HIV status, or any other classification protected by applicable federal and state nondiscrimination, equal opportunity laws, orders and regulations and remaining compliant and consistent with the Civil Rights Act; the Americans with Disabilities Act; the Rehabilitation Act of 1973; and Title IX of the Education Amendments of 1972. This policy on non-discrimination applies to admissions, enrollment, scholarships, loan programs, employment and access to participation in all GIA programs and activities.

Residency and Applicant Screening

Educational services to some countries may be restricted by U.S. law. Additionally, all applicants are screened against global watch lists to comply with U.S. Office of Foreign Assets Control (OFAC) and other applicable laws and regulations. GIA may not admit individuals who are sanctioned or reside in a country or territory sanctioned by the U.S. government. Visit www.GIA.edu/ethics-compliance for more information.

Prior Criminal Offenses

GIA does not require applicants to provide information about prior criminal offenses. Please note that prior convictions may result in challenges in securing employment after graduation.

Payment Methods

Staff members are available Monday through Friday from 9:00 a.m. to 6:00 p.m. to accept payment and discuss your account.

All payments must be in Thai Baht drawn on a Thai bank. GIA is not responsible for any bank charges that result from payments through a non-Thai bank. Please note the following information regarding payment methods and contact us at giabkkedu@gia.edu or +66 2779 6100 for more information.

Credit Card. You must make payment in person at GIA. Only VISA and MasterCard are accepted. A 3% bank surcharge is added. Applicants are responsible for paying any surcharges.

Direct Deposit. A direct deposit may be made to HSBC bank under GIA's account. Send payment slip with your application.

Wire Transfer. Students are responsible for any wire transfer fees that they incur.

Past Due Account Balance

Students who have a past due account balance will have disrupted service. Students will not be able to access courses in Blackboard, may not register into future courses or programs and will not receive their credential until they have settled the payment(s) owed.

Third-Party Payer Information

If someone other than the student is paying any part of a student's tuition and fees, such persons will be required to provide their full name and country of residence on the application for admission and once again at the time of payment. If a student's employer is paying any part of a student's tuition and fees, the student or the employer will be required to provide the full company name and address or other identifying information at GIA's request.

Scholarships

Scholarships offerings are available to those who qualify to help reduce their financial burden and focus on completing their chosen credentials. Visit www.GIA.edu/scholarships for more information on scholarships, eligibility, how to apply and required documents.

International Visa Requirements

Lab class applicants and those applying for the Applied Jewelry Professional do not require a student visa to attend school. All other international applicants must obtain a valid Non-Immigrant Student Education Visa ("ED" Visa) prior to entering Thailand. For additional details, please contact our education assistant at giabkkedu@gia.edu

At least 60 days before the first day of class, international applicants must submit their application, required documents, a non-refundable 5,000 THB visa processing fee and a 50% deposit of the total program charges.

Once documents and required payments are received and we confirm you meet the admissions requirements, GIA sends a letter of acceptance (issued by Thailand Ministry of Education). The student uses this letter to apply for their student visa with the Thai Royal Embassy or Thai Consulate in their country.

A student whose visa application is unsuccessful will be refunded the full deposit fee amount; GIA will withhold the visa processing fee 5,000 THB.

Transferability of Credits Earned at Our Institution

The transferability of credits you earn at GIA is at the complete discretion of an institution to which you may seek to transfer. Acceptance of the diploma or certificate you earn in the educational program is also at the complete discretion of the institution to which you may seek to transfer. If the diploma or certificate that you earn at this institution is not accepted at the institution to which you seek to transfer, you may be required to repeat some or all of your coursework at that institution. For this reason you should make certain that your attendance at this institution will meet your educational goals. This may include contacting an institution to which you may seek to transfer after attending the Gemological Institute of America to determine if your diploma or certificate will transfer.

Transfer Credit Policy

GIA does not accept transfer credit from other institutions. GIA does not currently have an articulation or transfer agreement with any other institution. GIA does not accept transfer credit for experiential or equivalent learning, challenge examinations or achievement tests.

Transferability of Coursework to another GIA Program

Graduate Diamonds or Graduate Colored Stones diplomas earned through a full-time, On Campus program at a GIA campus location or a GIA-affiliated school entity will be accepted for credit toward the Graduate Gemologist diploma.

Lab classes are not transferable into a full-time, On Campus program.

Tuition and Fees

Total charges are valid for programs, courses and classes from January 1, 2024 through December 31, 2024 and are subject to change with reasonable advanced notice. Amounts shown are in Thai Baht. The total charges for each program include tuition costs and required books and materials.

Course Charges

Program or Class	Tuition	Books	Materials	Total Charges
GEM 2500 - Graduate Gemologist	498,500	51,700	65,900	616,100
GEM 2200 - Graduate Diamonds	185,000	13,900	6,000	204,900
GEM 2300 - Graduate Colored Stones	313,500	37,800	59,900	411,200
GEM 1000 - Applied Jewelry Professional	27,000	9,700	0	36,700
JMA 370 - Jewelry Design	148,500	6,200	14,100	168,800
GEM 230L - Diamond Grading Lab	52,500	5,500	4,500	62,500
GEM 220L - Colored Stone Grading Lab	34,000	3,600	2,800	40,400
GEM 240L - Gem Identification Lab	52,500	7,500	3,200	63,200
GEM 149L - Pearl Grading Lab	10,500	1,700	400	12,600

- Total Charges do not include living expenses, technology and additional fees that may be assessed. See ["Additional_Fees" on page 32](#)
- All payments must be in Thai Baht. See ["Payment_Methods" on page 29](#)
- Scholarships are available to those who qualify. See ["Scholarships" on page 30](#)

Payment Due Dates

Payment amounts and due dates are as follows.

Lab Classes and Continuing Education. Total charges, including tuition, books and materials fees, are due at the time of registration.

On Campus Programs. 50% of the Total Charges are due at the time of registration to hold your seat in class. For international students, the non-refundable visa processing fee of 5,000 THB is due along with the 50% tuition and fee deposit at least 60 days before the class start. The remaining balance is due before the first day of class.

Past Due Account Balance

Students who have a past due account balance will have disrupted service. Students will not be able to access courses in Blackboard, may not register into future courses or programs and will not receive their credential until they have settled the payment(s) owed.

Additional Fees

Additional, non-refundable, fees may include:

- Non-refundable visa processing fee of 5,000 THB for international applicants.
- Living expenses such as housing, food, medical, insurance, transportation and entertainment
- Wire payment transfer fees
- Fees for optional books and materials, shipping, handling and applicable taxes
- Fees for optional field trips
- Fees for any lost or damaged equipment, precious metals and stones
- Fees for replacement of any required books, tools and materials
- 1,500 THB half-day; 2,500 THB full-day use of the Student Workroom
- 1,000 THB ID or access badge replacement fee
- 100 THB letter of completion replacement fee
- 10 USD official transcript fee
- 70 USD diploma replacement fee (excludes expedited shipping)
- 65 USD certificate replacement fee (excludes expedited shipping)

Cancellation, Withdrawal and Refund Policies

GIA's cancellation, withdrawal and refund policies for GIA's Bangkok campus are explained in detail in this section and in your enrollment agreement. If you have questions, contact us at giabkkedu@gia.edu or +66 2779 6100

Cancellation and Withdrawal of Enrollment

Students may submit their cancellation or withdrawal notice by contacting admissions at giabkkedu@gia.edu, +66 2779 6100 or in person. Cancellation or withdrawal is effective on the date GIA receives the student's notice in any manner.

A student's registration/enrollment will be cancelled by the school with a full refund of institutional charges for failure to i) sign the enrollment agreement, ii) start the program ("no-show") and/or iii) make a required payment at the time of registration and prior to the class start date.

A student will be administratively withdrawn if they fail to return from a leave of absence, do not maintain satisfactory academic progress, or are otherwise dismissed due to lack of attendance or violation of a GIA policy. A grade of SWD is recorded on the student's academic record and any refund is calculated according to GIA's refund policy below.

Refund Policy

Students may cancel their enrollment agreement and receive a refund of all monies paid if they cancel before the first day of class less any nonrefundable visa processing fee. Thereafter, a pro-rata tuition is calculated.

Scholarship recipients are subject to the refund policy described in their acceptance letter.

Unused books and materials, that are undamaged, are eligible for full refund upon inspection by GIA. Books and materials that are used or not returned in salable condition are non-refundable.

Any credit balance on a student's account after unearned scholarship funds have been returned, will be refunded within 30 days of the date GIA received the notice of cancellation or withdrawal, or the last date of attendance, whichever is later.

The failure of a student to provide accurate and complete payment and banking information may delay a refund of tuition to the student.

Pro-Rata Tuition Refund

Cancellation or Withdrawal Date	Tuition % Retained by GIA	Tuition % Refunded
Up to 10% of class hours	10%	90%
More than 10% and up to 25% of class hours	25%	75%
More than 25% to 50% of class hours	50%	50%
After 50% of class hours	100%	0%

Refund Calculation Example

A student paid tuition of 52,500 THB for a lab class with 35 clock hours and withdrew after 14 class hours. GIA retains 26,250 THB, calculated as follows:

$$\% \text{ Completed} = 14 / 35 \text{ hours} = 0.40 (40\%)$$

$$\text{Tuition Retained by GIA} = 50\%$$

$$\text{GIA Retains} = 52,500 \text{ THB (tuition)} \times 0.50 = 26,250 \text{ THB}$$

$$\text{Refund} = 52,500 \text{ THB} - 26,250 \text{ THB} = 26,250 \text{ THB}$$

Student Services

Our administrative staff provide a variety of services and resources to help ensure your success as a student and graduate of GIA.

Housing and Transportation

GIA does not have dormitory facilities. There are many rental and hotel opportunities within close proximity of the campus. Start your search about 45 days before your arrival and be sure to use a reputable third-party provider.

It is important that you thoroughly research your options before taking residence. If renting a room or sharing an apartment, your due diligence should include interviewing the renter and any occupants as well as doing an Internet search of the address and of any individuals living in the home. GIA does not screen these listings, nor does it offer a roommate placement service.

Current housing costs around the Bangkok campus can range from 25,000 to 110,000 THB per month or more for apartments. Hotel stays can average 2,000 to 4,000 THB per night excluding taxes and other fees.

GIA is easily accessible by public transportation with a direct underground walkway link to the MRT Samyan Station: <https://www.mrta.co.th> The location has easy access to other main public transportation and expressways.

Contact us at giabkkedu@gia.edu or +66 2779 6100 for information or assistance.

Food and Beverage

Students have several choices for snack and lunch needs. Food can be purchased off-campus from a variety of nearby locations with many restaurants and food vendors in the building. The student lounge is furnished with tables and chairs and a kitchen with refrigerator, microwave and utensils is available for those who prefer to bring their own food.

Health Care and Insurance

GIA student services can help you locate medical professionals in the area. Health insurance for students is not provided by GIA. All students are strongly urged to maintain medical insurance coverage. If you do not have medical insurance, GIA Student Services representatives can give you information about companies that provide student medical insurance.

Students should be aware that any medical needs, services and expenses are the student's personal responsibility.

Disability Services and Accommodation

Our belief is that disability is not a limitation, but rather an indication of perseverance, strength and determination in accomplishing all life endeavors. Our intention is to promote access, equity and inclusion; to instill a true sense of belonging at GIA for students with disabilities.

GIA is committed to ensuring equal access to its programs and activities for qualified individuals with disabilities and will make efforts to accommodate those with special requirements or needs by granting reasonable accommodations where appropriate. See "[Academic Progress Policies](#)" on page 39 for the details and procedures for requesting accommodation.

International Student Support

Our admissions team provide specialized support to international students by helping them prepare for and adjust to living and studying in Bangkok.

They provide information about important immigration-related issues and specific assistance with the student visa and other applicable immigration application processes. They also help students get oriented to life on campus and provide other assistance such as travel, health care and insurance and housing. Contact us at giabkkedu@gia.edu or +66 2779 6100.

Internet Access

Wireless Internet access is available at no charge.

Career Services - Resources

Job Seeker's Handbook

The Job Seeker's Handbook is a guide to starting your job search in the gem and jewelry industry. It includes sample resumes and cover letters, tips on job searches, interviewing and more. We encourage you to use it as you begin your professional journey. Download or view the handbook at www.GIA.edu/gem-careers

GIA Gem & Jewelry Career Center

The GIA Gem & Jewelry Career Center is a premier career platform and online job board exclusively for the gem and jewelry industry. Employers from every sector of the jewelry industry list opportunities with us, including retailers, wholesalers, design houses, auctioneers and many others.

As a job seeker, you will be able to customize your job search and create a full-featured profile that will help you market yourself to employers. You can also access tools to help you prepare for interviews. There is no charge to use this service. You can access the career center on our website at www.GIA.edu/gem-job

Guest Speaker Series

GIA regularly organizes free on-campus presentations by industry professionals on an array of subjects affecting the gem and jewelry industry, such as appraising information, mining practices and finds, diamond treatments, cutting-edge lab discoveries and colored stone controversies. All students and graduates are invited to attend. Guest speakers offer valuable and fascinating insight to assist students and graduates in their career planning.

Library and Learning Resources

Bangkok Library Services

GIA's Bangkok campus has a small library with books on diamonds, colored stones and jewelry; trade magazines and journals. The library also subscribes to a variety of science, business, fashion and jewelry industry magazines. Books belonging to GIA are not to be taken from the premises. Photocopying is not permitted. For more details of how to use the library, please ask at reception.

Library and Information Center - Main Campus (Central)

The Richard T. Liddicoat Gemological Library and Information Center located at GIA's Carlsbad campus and world headquarters is the largest library of its kind housing a growing collection of over 65,000 books, 1,000 periodical titles in various languages and 2,000 videos and other media. Students at Bangkok's campus have access the Library's reference service and online resources.

Archives. The Library's archives and rare book collection has works dating back to 1496. Works no longer under copyright (pre-1926) are being digitized with over 1,000 titles freely available on Internet Archive at <https://archive.org/details/gialibrary>.

eBooks. Students and alumni may access the contemporary e-book collection on the Libby app at <https://libbyapp.com>. Contact us at library@gia.edu for a username and password.

Website. The library section of the GIA website offers additional resources, from recommended book lists to listings of gemstone pricing guides and appraisal associations. www.GIA.edu/library

Reference service. The library is the first point of reference for gem and jewelry professionals. Whether in person or by phone or email, librarians answer questions from scientists, jewelers, gemologists, students, researchers, authors and the media from around the world. They provide quick reference information on topics including treatments, laboratory-grown gems, business management, jewelry history and more.

Hours and contact. The Library is open from 7:30 a.m. to 5:00 p.m. PT, Monday through Friday. Contact us at library@gia.edu or +1 760 603 4046.

Education Stone Sets

Our education stone sets are a significant learning resource used by students to gain hands-on, practical experience in diamond grading, gem identification and colored stone grading. Each series of stone sets is specifically integrated with the curriculum at the appropriate learning point. Each stone is carefully selected to ensure students are exposed to a wide variety of natural, lab-grown, and treated gem species, varieties and qualities they might encounter once employed in the trade.

Blackboard Learning Management System

Students have 24/7 online access to the Blackboard Learning Management System (LMS). Gemology students access their curriculum in a media-rich online format with embedded videos and animations to supplement learning, as well as an online glossary and links to additional learning resources such as additional videos, supplemental reading, PDF charts and references. For all On Campus students, the LMS provides access to the GIA Library and Museum's digital resources, including eBooks, audio books and videos, digital periodicals, the digitized rare book collection, the library lecture schedule, virtual museum exhibits and the Gübelin Gem Project (a repository of data on over 400 gemstones).

GIA Alumni Collective™

The GIA Alumni Collective is here to provide students and graduates with diverse opportunities, insights and connections that fuel their development, progress and passion at every point of their career. Contact us at alumni@gia.edu

Membership. After successfully completing a GIA course or program, graduates become part of our alumni community, the GIA Alumni Collective™, an elite global network with over 155,000 members across 55 chapters worldwide. The GIA Alumni Collective connects graduates to an open, inspirational and passionate community that aims to help graduates cultivate a lifetime of success.

The community. GIA alumni are key influencers throughout the gem and jewelry industry. Our GIA Alumni Collective online community allows GIA graduates to communicate with like-minded gem and jewelry professionals and display their credentials in our Alumni Directory. Not only can GIA graduates view and participate in virtual and in-person events in their local areas, they can go beyond their borders and network with alumni from around the world. Register for the community at <https://collective.GIA.edu>.

Global chapters. GIA's global chapters span the globe from Manhattan to Mumbai. As a member of the GIA Alumni Collective, you have the opportunity to participate in local meetings and events that further your professional development and connect you to your gem and jewelry community. Visit <https://collective.gia.edu/global-chapters.html> to explore or join a local chapter.

Academic Policies and Procedures

Academic policies and procedures help ensure the quality of every student's academic experience, support the investment our graduates make in their education and help to preserve the integrity of GIA's diplomas and certificates.

Orientation Requirements

Students must complete an online and in-person orientation prior to the first day of class. Students who cannot attend the scheduled in-person orientation, should contact admissions at giabkkedu@gia.edu as soon as possible to reschedule. Students are not allowed in class until the orientation requirements are completed. Any time spent out of class to complete orientation will be considered missed hour(s) according to the attendance policy.

Attendance Policy

The curriculum is intense and students are strongly encouraged not to miss any class time. Classes begin promptly at the scheduled start time. A student may not leave the classroom without advising the instructor except at scheduled breaks.

Every morning and at each break, attendance is taken and recorded in full hour increments. A student who misses any part of a scheduled class hour will be marked for a full hour missed. For example, if a student arrives 10 minutes late to class, they are marked for one hour missed.

Attendance is specific to the program of enrollment as indicated in the chart below. Students are responsible for being aware of how many hours they have missed. Students who approach the maximum hours allowed are given a courtesy warning.

On Campus students who accumulate six hours less than the maximum allowed are placed on Attendance Probation. See ["Advising and Probation" on page 40](#) Any student who misses more than the maximum number of hours allowed are dismissed. See ["Dismissal Policy" on page 41](#)

Maximum Allowable Missed Hours - On Campus

Program	Program	Maximum Missed Hours
Graduate Gemologist	780	68*
Graduate Colored Stones	570	47
Jewelry Design	270	23
Graduate Diamonds	210	21
Applied Jewelry Professional	35	3

* No more than 21 hours may be missed in the first seven weeks.

Maximum Allowable Missed Hours - Lab Classes

Class	Class Hours	Maximum Missed Hours
Diamond Grading Lab; Gem Identification Lab	35	3*
Colored Stone Grading Lab	21	2*
Pearl Grading Lab	7	0*

* Students cannot miss any hours on the first day of class.

Clock Hours

"Clock hours" refers to number of scheduled instructional hours for each program. One clock hour equals a minimum of 50 instructional minutes within a 60-minute time period. The definition of a clock hour is separate from, and does not apply to, GIA's attendance policy.

Make-Up Hours

The attendance policy allows for a limited number of excused missed hours; make-up hours are not available. Accommodation is made for an approved religious observance. Accommodation requests are to be submitted to the school director for consideration..

Homework Policy

Homework must be submitted by the scheduled due date and time indicated on the class schedule. Students who do not submit homework on time receive a score of zero.

Make-Up Work

Students have ample time to make-up missed practical work during regularly scheduled lab hours. A student may be approved to make-up a missed quiz or homework assignment for extenuating circumstances such as injury or illness, death in the family, or other circumstance determined by the institution. Requests are to be submitted to the school director for consideration.

Classroom Policies

Students are required to adhere to the following policies:

- Use of mobile phones and other devices in class is strictly prohibited. These devices must be set on silent and placed in a designated location. Devices may be used if the student leaves the classroom.
- Eating is not permitted in classrooms. Beverages in closed containers are allowed.
- Non-GIA issued tools are not allowed in the classroom. Exceptions may be approved by the school director for safety or ergonomic considerations. GIA is not responsible for loss of or damage to personal tools.
- Keycards may not be taken from any classroom.
- Blank or completed worksheets, quizzes or exams may not be taken out of the classroom.
- Projects and materials may not be taken out of the classroom without instructor's permission.
- Students must work individually unless the instructor directs otherwise.

Program-specific policies may be provided and reviewed during orientation.

Testing Policy

Testing measures a student's comprehension of the curriculum and mastery of skills. The following rules apply:

- Students are strongly advised not to miss a scheduled quiz, test or exam. Those not taken on the scheduled date and time receive a score of zero.
- Quizzes, tests and exams in progress may be declared null and void if a classroom must be evacuated for any reason. The test will be rescheduled as necessary.
- Quizzes, tests and exams must be completed within the specified time limit.
- All quizzes, tests and exams are closed-book unless the instructor indicates otherwise.

- All quiz, test and exam submissions are final.
- Reviews of specific exam questions are only provided to gemology students who do not pass.
- Students with English as a second language may use a printed English translation dictionary, but only after it is examined by the instructor. Electronic translators may not be used.
- Unauthorized electronic devices may not be used during testing.
 - Mobile devices must be turned off and placed in a designated location.
 - Cameras and other recording devices are not allowed.
 - Standard, non-programmable calculators are allowed.
 - In some cases, GIA may provide electronic devices; if so, students must follow instructor's directions.

Grading System

GIA uses a Pass/No Pass (P/NP) grading system. Final grades are assigned and recorded in the student's permanent academic record as follows.

Grade	Definition
P (Pass)	75% and higher and met the graduation requirements
NP (No Pass)	74% or less and failure to meet the graduation requirements
SWD (Student Withdrawal)	Student was withdrawn from their program of enrollment after the cancellation period.
INC (Incomplete)	This is a temporary grade that is converted to P, NP or SWD based on the definition of these grades. Students who fail to complete their coursework within the agreed-upon time receive a final grade of NP.

Grading Policy

Final grades are awarded to each student, in each program, within two business days of the end date.

Assignments, quizzes and exams completed in Blackboard are graded immediately upon submission. Online assignments, quizzes and exams are graded immediately upon submission. Practical assignments, quizzes and exams are typically graded within two business days. Students can access grades and monitor their progress throughout their program in the Blackboard LMS at <https://blackboard.gia.edu>

Academic Integrity Policy

GIA highly values academic integrity, meaning an honest representation of one's own work. While we also value the benefit of collaborative education where students are able to work with and learn from one another, there is a line between collaboration and academic dishonesty. Students who violate this policy are subject to discipline up to and including dismissal. Examples of academic dishonesty include but are not limited to the following:

Cheating. Copying another student's work or using unauthorized aids during an examination, test or quiz or to complete a project, assignment or worksheet. Examples of unauthorized aids include written notes, mobile phone or other device, AI, the Internet and homework/test/quiz sharing or exchange sites.

Plagiarism. Copying work or ideas, including but not limited to the use of electronic aids and misrepresenting them as one's own.

Falsification. Making up fictitious information or altering records for the purpose of misrepresentation.

Facilitation. Helping another student to cheat, plagiarize, or falsify information. Some examples include:

- knowingly allowing another student to copy your work
- sharing or exchanging quiz, test, exam or assignment questions and/or answers with another student, on a site that may be searched by others, or referring another student to those sites
- copying or reproducing keycards or quiz, test, exam or assignment questions by any means
- unauthorized possession of practical assignments or projects

The failure of a student to report known or suspected cheating or other forms of academic dishonesty is also considered a violation of this policy.

Student Identity Verification

GIA establishes that the student who registers in a program is the same who participates in and completes the program by one or more of the following methods:

- Collecting a copy of a government-issued photo ID or passport
- Using a secure login and password to complete written assignments, quizzes and exams
- Taking and recording attendance

Academic Progress Policies

GIA monitors each student's academic progress to ensure they are moving toward successful completion of their program. Students receive progress reports at scheduled benchmarks. Throughout their program, students can monitor their progress in the Blackboard LMS at <https://blackboard.gia.edu> or request a conference with their instructor.

Satisfactory Academic Progress (SAP)

For 780 clock-hour programs (Graduate Gemologist), SAP is evaluated at the midpoint of the program.

Students must maintain a cumulative average score of 75% or higher, rounded up to the nearest 1%, on all coursework including homework, practical assignments, quizzes and tests as well as minimum completion requirements for any practical work as specified in the course syllabus.

Withdrawal (SWD) and Incomplete (INC) grades are considered in cumulative grading standards and as attempted hours in maximum time-frame measures.

All students who fail to meet the SAP requirement at the midpoint of the program are placed on Academic Probation, notified in writing and issued an Academic Improvement Plan. See "Advising and Probation" on page 40. Students who do not meet the terms of their Academic Improvement Plan are dismissed. See "Dismissal Policy" on page 41.

Institutional Academic Progress Standards

In addition to the SAP for 780 clock-hour programs, all On Campus students are held to academic standards evaluated at benchmarks specified in the course syllabus. Students who do not meet the academic standards specified in their syllabus are placed on Academic Advising, notified in writing and issued an Academic Improvement Plan. See "Advising and Probation" on page 40. Students who do not meet the conditions of their Academic Improvement Plan are dismissed. See "Dismissal Policy" on page 41.

Maximum Timeframe

Students must complete their program within a maximum timeframe not exceeding 150% of the published program length, measured in calendar time and clock hours. The days that a student is on an approved LOA is excluded from the maximum timeframe measurement.

Lab Classes

Lab class students are expected to attend scheduled classroom hours and participate in lectures, discussions and lab sessions to successfully progress through the class. Students who exceed the maximum allowable absences as described in the Attendance Policy are dismissed.

Extended Lab Hours

GIA may schedule additional lab hours for students who are not meeting academic progress standards.

Advising and Probation

Students who do not meet academic, attendance or behavior standards may be placed on an advising or probation status. The purpose of this is to i) formally notify students that their performance does not meet the standards, ii) set goals for improvement and iii) provide guidelines and a reasonable amount of time to meet those standards.

Academic Advising

Students who do not meet institutional academic standards are placed on Academic Advising and issued an Academic Improvement Plan. The student's progress is monitored by the instructor and the school director. If the student meets all conditions by the date specified in their plan, their academic status is returned to good standing. Students who do not meet the conditions of their plan are dismissed.

Academic Probation

Students enrolled in 780 clock-hours programs who fail to meet the satisfactory academic progress (SAP) requirements at the midpoint of their program are placed on Academic Probation, notified in writing and issued an Academic Improvement Plan. If the student meets all conditions by the date specified in their plan, their academic status is returned to good standing. Students who do not meet the conditions of their plan are dismissed.

Attendance Probation

On Campus students who accumulate six hours less than the maximum allowed are placed on Attendance Probation and

notified in writing. Students who accumulate more than the maximum allowed hours are dismissed.

Behavioral Probation

Students who do not comply with the Student Code of Conduct and Standards of Behavior may be placed on Behavioral Probation and notified in writing. Students who do not meet the terms of their probation are dismissed.

Leave of Absence Policy

Students enrolled in any On Campus program may request a leave of absence (LOA) at any time during their studies with proper cause and supporting documentation. Students enrolled in lab classes, and programs less than 40 hours, are not eligible for a leave of absence. An LOA is approved for a documented family emergency, serious illness or for active military duty. GIA may also approve an LOA for involuntary reasons such as national or state emergency, pandemic, or other extenuating circumstances. Contact the school director, or their delegate, at bkkschooldirector@gia.edu for additional information.

A leave will be approved if GIA determines that i) there is a reasonable expectation that the student will return, ii) the request complies with this policy and iii) there is space available for the student to return to the program within the maximum allowable leave time. If approved, an addendum to the student's enrollment agreement is generated.

Maximum Length. The maximum length of time for an LOA is 180 calendar days. A student may be granted more than one leave, but combined cannot exceed 180 calendar days within a 12-month period. Students must submit any request to extend an approved LOA in writing to the school director prior to the expiration of their original LOA.

Requesting Leave. The LOA request must be submitted in writing to the school director in advance. The request must be signed and dated by the student and include the reason for the request. If unforeseen circumstances prevent a student from providing a prior written request, GIA may approve the student's leave and collect the written, signed and dated request at a later date. Students who do not select an available return date within five business days of submitting the LOA request will be withdrawn.

Returning from Leave. Students are placed back into the program at a point determined to ensure their success, generally students are asked to repeat two weeks. There is no fee for repeat class time. Students may return earlier from a leave given class availability. Students who do not return as agreed are withdrawn. A final grade of SWD is posted to the student's academic record and any refund is calculated according to the terms of the student's enrollment agreement. Withdrawn students who wish to continue will need to re-enroll from the beginning of the program at current tuition and fees.

Dismissal Policy

GIA may terminate a student's enrollment for academic, attendance or behavioral reasons at any time. Reasons for dismissal include, but are not limited to:

- Violation of Student Code of Conduct and Standards of Behavior or other institutional policies
- Failure to meet academic progress standards
- Failure to abide by the attendance policy
- Cheating or any other form of academic dishonesty
- Offensive, disruptive, threatening, harassing, bullying or insubordinate behavior
- Stealing school property or the personal property of any individual
- Use, possession or sale of alcohol, illegal drugs or controlled substances anywhere on school premises
- Possession of firearms or other weapons on school premises
- Providing false information and/or willfully omitting information on any GIA document or form
- Conducting any activities that harm the name, reputation or property of GIA

Upon dismissal, a final grade of SWD is posted to the student's academic record and any refund is calculated according to GIA's Refund Policy.

Appeal for Readmission

Students who are dismissed must submit a formal appeal in order to be readmitted into any GIA program, course or class. Submitting an appeal does not guarantee readmission, which is at the sole discretion of GIA.

Appeal Process

Students must submit an *Appeal for Readmission Form* and any additional supporting documentation to the Admissions Committee for review. The school director, or their delegate, will notify the student of the committee's decision within 10 business days of the receipt of the appeal.

If approved, the student is notified of any readmission terms or conditions.

A student may submit a maximum of three appeals. If a student is dismissed for behavior reasons and the first appeal is denied, subsequent appeals will only be considered following a two-year waiting period.

Student Workroom

Student Workroom is available to complete the practical requirements of the Gem Identification online course, take a supervised exam, or practice on equipment and gemstones.

Student workroom is available on a first-come, first-served basis for up to four students. Please contact us at giabk.edu@gia.edu or +66 2779 6100 to determine availability and reserve a seat. Students who wish to cancel their reservation must notify GIA at least 24 hours in advance. Otherwise, students will be charged for the reservation.

Students attending the Student Workroom must arrive on time at the start of each session, morning and afternoon.

Students who are repeatedly late may lose Student Workroom privileges.

Graduation Requirements

To maintain enrollment, students must continue to meet academic progress, attendance and behavioral standards throughout their program. In order to graduate and earn their credential, students must satisfy the minimum academic requirements shown on the following tables. A final grade of Pass (P) is required to complete a program. All tuition and fees must be paid in full and all stones, equipment, library books and materials must be returned in good condition prior to graduation. Certificates and diplomas are not awarded until all educational and financial obligations are met.

Graduation Requirements – Gemology

Credential	Minimum Requirement	Maximum Number of Attempts
Graduate Gemologist Diploma		
Must meet all graduation requirements for the Graduate Diamonds and Graduate Colored Stones Diplomas listed below		
Graduate Diamonds Diploma		
Assignments and Quizzes	75% cumulative average	—
Practical Stone Count	100% of minimum requirement	—
Diamond Essentials Final Exam	75% score	3
Diamonds & Diamond Grading Final Exam	75% score	3
Diamond Grading 5-Stone Practical Exam	75% score	3
Graduate Colored Stones Diploma		
Assignments and Quizzes	75% cumulative average	—
Practical Stone Count	100% of minimum requirement	—
Colored Stone Essentials Final Exam	75% score	3
Colored Stones Final Exam	75% score	3
Gem Identification 20-Stone Practical Exam	100% score	5
Applied Jewelry Professional Diploma		
Jewelry Essentials Final Exam	75% score	3
Diamond Essentials Final Exam	75% score	3
Colored Stone Essentials Final Exam	75% score	3

Completion Requirements – Lab Classes

Class	Minimum Requirement	Maximum Number of Attempts
Diamond Grading Lab	75% score on 2-Stone Practical Exam	3*
Colored Stone Grading Lab	75% score on 2-Stone Practical Exam	3*
Gem Identification Lab	75% score on Instrumentation Exam	3*
Pearl Grading Lab	75% score on 2-Stone Assessment	1

* One attempt is taken during the class. Additional exam attempts are taken in a Student Workroom.

Graduation Requirements – Jewelry Arts

Program	Minimum Requirement	Maximum Number of Attempts
Jewelry Design Certificate		
Unit I Design Assignments	100% completed with passing score	—
Unit II Design Assignments	75% completed with passing score	—
Quizzes	75% cumulative average	1
Final Practical Exam	75% score	2
Final Written Exam	75% score	2
Final Design Exhibition	Participation required, including all required components	1

Student Records

The care and protection of applicant, student and graduate data is of utmost importance. GIA's Student Privacy Notice, found at www.GIA.edu/student-privacy-notice, describes the policies and practices regarding our processing, including collection, use and handling of personal data. Student records are maintained in accordance with federal, state and accreditation requirements; transcript data is retained permanently.

Contact Information

Students may update their contact information by contacting us at giabkkedu@gia.edu

Legal Names

A person's legal first, middle and last name as it appears on official governmental documents is required for official student records and will appear on all transcripts, certificates and diplomas. Students may request to not display their middle name on their credential by contacting the student records department.

GIA requires official documentation and written authorization to make changes or corrections to the legal name listed in your student records. You must submit one document that shows the current/old name that is in our records and another document that shows your new/updated name. The following documentation is acceptable:

- Valid government-issued photo ID
- Marriage certificate
- Divorce decree
- Naturalization documents
- Other court-issued document

Preferred Name and Pronouns

GIA recognizes that many students use a first name other than their legal first name to identify themselves. A student's preferred name will be displayed on class rosters, in the learning management system (Blackboard) and in the My GIA Education Portal. Members of the GIA community respect each other by using the personal pronouns individuals identify for themselves. Students may provide a preferred first name and pronouns at the time of admission or anytime thereafter on the My GIA Education Portal.

Letters of Good Standing

Upon request, GIA will issue a letter of good standing that are typically needed by insurance companies or other agencies as evidence of student status. A student is considered to be in good standing if they are not currently on an academic advising or probation status. GIA does not issue letters of recommendation. Contact us at giabkkedu@gia.edu or +66 2779 6100.

Transcripts

Current students may download an unofficial transcript on the My GIA Education Portal at <https://education.GIA.edu>. Graduates may contact our campus manager at giabkkedu@gia.edu to request a copy of their unofficial transcript. These are provided at no charge.

Current students may order an official transcript from our vendor on the My GIA Education Portal at <https://education.GIA.edu>. Current students and graduates may order an official transcript directly from our vendor at www.parchment.com/u/registration/individual. There is a 10 USD fee for each transcript ordered.

Contact us at giabkkedu@gia.edu for inquiries or further instructions.

Diplomas and Certificates

Students will receive both a printed and a digital copy of their On Campus diploma or certificate once all graduation requirements are met and the credential has been conferred. Print diplomas are mailed directly to the student's address on record. Students may update their shipping address by emailing giabkkedu@gia.edu. The student will receive a confirmation email once the print diploma or certificate has shipped and a second notification with access to their digital diploma or certificate.

Students must report in writing if a printed diploma or certificate is damaged in transit or was not received within 10 business days after receiving the shipment confirmation. A photo may be required in the case of damage. In these cases, a replacement is provided at no charge and will be reshipped within 15 business days of receiving the student's written notice. For inquiries, contact us at giabkkedu@gia.edu or +66 2779 6100

Diploma and Certificate Holds

Students will not receive a diploma or certificate until all academic and financial obligations are met.

Reprint Diplomas and Certificates

Reprint diplomas and certificates are \$70 and \$65 respectively. Reprint diplomas and certificates are issued in the current format and include the reissue date. All reprints bear the signatures of GIA's current school officials. To order a replacement, contact the vendor at <https://parchmentsupport.force.com> or student records at giabkkedu@gia.edu or +66 2779 6100.

Graduation Announcements

Graduation announcements are available upon request. Contact us at giabkkedu@gia.edu or +66 2779 6100.

Education Verification

Those wanting to confirm a GIA graduate's credentials may check the GIA Alumni Online Directory. The search results will return those graduates who have opted to have their information displayed online. Individuals may also submit a written request to verify a graduate's credentials by submitting the request form on our website located at www.GIA.edu/doc/GIA_Education_Verification-Request.pdf.

Academic Credentials Usage Policy

Usage guidelines apply to all current and former students of the Gemological Institute of America, Inc. and its related entities (collectively referred to as GIA).

Usage Guidelines for Academic Credentials

Academic credentials earned at GIA are respected by gem and jewelry professionals around the world. They are the internationally recognized symbol of the highest standard of education in the fields of gemology and jewelry arts.

It is appropriate and customary for recipients of GIA diplomas to signal their achievement by appending the relevant academic designation to the end of their name. It should be noted, however, that GIA alumni are required to abide by specific standards of usage.

Although the following examples do not reference every diploma offered by the Institute, they should help you determine how GIA's Usage Guidelines for Academic Credentials apply to you.

General Usage

You may reproduce and display your GIA diploma, certificate or letter of completion in its entirety. Note that when a

credential is advertised, it must be used in association with the recipient's name and the advertisement must not in any way state or imply an affiliation with or endorsement by GIA.

Only the acknowledgment of a diploma or degree from GIA should be placed on business cards. Individual coursework that is completed but does not result in a diploma is best listed on resumes and curriculum vitae.

Diplomas

The following examples refer to the Graduate Gemologist (GG), Accredited Jewelry Professional or Applied Jewelry Professional™ (AJP®), Gemologist, Jewelry Design & Technology (JDT) and Graduate Jeweler (GJ) diplomas:

- John Doe, GIA Graduate Gemologist, or John Doe, GIA GG
- Jane Doe, GIA Applied Jewelry Professional, or Jane Doe, GIA AJP
- Jane Doe, GIA Jewelry Design & Technology, or Jane Doe, GIA JDT
- John Doe, GIA Graduate Jeweler, or John Doe, GIA GJ
- Jane Doe, GIA GG, GJ

The following examples refer to the Graduate Diamonds, Graduate Colored Stones and Graduate Pearls diplomas:

- Jane Doe, GIA Diamonds Graduate
- John Doe, GIA Colored Stones Graduate
- Jane Doe, GIA Pearls Graduate

The following example refers to the Applied Jewelry Arts (AJA) diploma:

- John Doe, GIA Applied Jewelry Arts, or John Doe, GIA AJA

Employment Citations

Companies may state that they have GIA Graduate Gemologists, Applied Jewelry Professional™ (AJP®), Accredited Jewelry Professionals, Gemologists, Graduate Jewelers, or Jewelry Design & Technology graduates on staff, provided that such statements are accurate and companies agree to cooperate with any verification that may be requested by GIA or others.

Administrative Policies

This section includes standards, policies and procedures that describe the rights and responsibilities of students.

Student Code of Conduct and Standards of Behavior

GIA's Student Code of Conduct and Standards of Behavior protects the rights of students and employees and ensures a safe, secure and positive learning environment for all students. GIA students are expected to behave in a professional manner and to treat others with dignity and respect at all times. Students are responsible for reading, understanding and following all GIA student policies.

Prohibited behavior includes, but is not limited to:

- Threatening or harassing behavior, including sexual harassment or misconduct
- Acts of retaliation against another student or GIA staff member
- Acts or threats of violence
- Possession of a firearm or other weapon on campus
- Use, sale, purchase, transfer, manufacture, distribution, or possession of illegal drugs, controlled substances or alcohol
- Forgery, fraud or dishonesty
- Disruptive, insubordinate or unlawful behavior
- Academic dishonesty
- Property damage or theft
- Violation of other GIA policies

In addition to the policies published in this catalog, students are expected to adhere to policies and procedures relating to drug and alcohol abuse prevention, workplace and campus violence, discrimination, harassment and misconduct published at www.GIA.edu/student-consumer-information.

Students who become aware of anything that seems unsafe, improper, or illegal must report it to GIA staff immediately.

Social Media and Networking

GIA embraces the opportunities and information available to students and staff through social media such as networking sites, blogs, wikis, chat rooms and others. However, any online behavior which is brought to the attention of a school official that violates the Student Code of Conduct and Standards of Behavior may be addressed under this policy.

Students are asked to use good judgment as their actions and statements have the ability to adversely affect themselves, others and the school as a whole. Posts on social media may be replicated quickly, be taken out of context and remain public for an indeterminate amount of time.

Communication between current students and GIA employees on social media may create the appearance of favoritism or conflict of interest. Therefore, staff are subject to GIA's employee social media and networking policies when communicating with students on social networks.

Violations

The school director or their delegate will commence an investigation into allegations of violation of student code of conduct. Students are required to cooperate with GIA representatives during an investigation. GIA considers all information collected during an investigation in the decision-making process. To maintain the safety and the integrity of its investigation, GIA reserves the right to suspend a student pending investigation. GIA will make every effort to operate on the fundamental principle of mutual trust and respect among students, faculty, staff and administration.

Sanctions

With sufficient evidence, GIA at its sole discretion may impose one or more sanctions, depending on the nature and severity of the offense. Sanctions may include verbal warning, written warning, behavioral probation, or dismissal. In cases involving potential criminal conduct, GIA will determine in its sole discretion whether appropriate law enforcement or other authority must be notified.

Drug and Alcohol Abuse Prevention

GIA insists on an alcohol and drug-free environment and prohibits the unlawful use, sale, purchase, transfer, manufacture, distribution, or possession of illegal drugs, controlled substances, or alcohol on GIA premises, at GIA sponsored events or activities.

Reporting to campus under the influence of alcohol, drugs or other substance that impairs one's mental or physical capacity is a violation of this policy and may result in sanctions up to and including dismissal. GIA may also discipline students for off-campus activities that include the illegal use of alcohol or drugs.

Students or any person in the school community who are aware of the use or existence of any such substances at GIA should notify a staff member immediately.

Violation of this policy will result in disciplinary action up to, and including, student dismissal. Students may be subject to federal, state, and local fines and/or prosecution. GIA will determine in its sole discretion whether the appropriate law enforcement or other authorities will be notified.

Dress Code

GIA's dress code helps maintain an environment that is safe, professional, respectful and inclusive for all. Students are expected to dress in good taste and appropriate for the occasion or setting. Students are encouraged to dress comfortably with safety as an important consideration. During special occasions, such as Career Fair, business attire should be worn. Clothing must cover all undergarments. No underwear or undergarments may be visible at any time. Clothing must not be see-through. Bare feet and clothing with derogatory or offensive messages are prohibited.

Smoking on Campus

Smoking, including e-cigarettes, or use of tobacco in any other form, is prohibited inside GIA buildings. Please also refrain from smoking in front of the building.

Campus Safety and Security

Keeping GIA campuses safe for our students, employees and visitors is one of our top priorities. During hands-on lab sessions, students may use chemicals, equipment and tools that can be hazardous if they are handled incorrectly or without proper precautions. Students must follow all safety guidelines and the instructor's directions when using dangerous tools or hazardous substances and wash their hands thoroughly after handling any chemicals.

Student Notification of Classroom Chemical Usage

GIA recommends and promotes awareness on the use of good laboratory practices to individuals who may be exposed to chemicals such as gem refractive index (RI) liquid, which contains diiodomethane also known as Methylene Iodide. RI liquid is used in Graduate Colored Stones, Gem Identification Lab and the Student Workroom. You may need to exercise special precautions if you are pregnant, if you have certain medical conditions and/or if you have sensitivity or are allergic to this chemical. If you are unsure, contact your physician for advice. GIA provides protective gloves and appropriate disposal containers in each classroom. The Safety Data Sheet (SDS) is posted in each classroom and GIA will provide a copy on request.

Emergency Notifications

Emergency notifications are triggered by a broad range of potential threats — any significant emergency or dangerous situation involving an immediate threat to the health or safety of students, employees or visitors on campus. Emergency notifications will be made without delay, taking into account the scope of the emergency and the safety of the community. Students will be notified by home phone, cell phone, text message or email. When you receive an automated notification, listen carefully to the instructions; you can also call +66 2779 6100 and listen to the recorded message for further instructions and information. Be sure to keep your contact information up to date so GIA can reach you in an emergency situation.

Weapons

Under no circumstances are students or visitors allowed to bring firearms or other weapons to campus. Students found carrying or concealing weapons are disciplined, up to and including dismissal from GIA and referral to appropriate law enforcement agencies.

Search and Seizure

GIA may open and inspect the contents of any student's desk, locker, computer files and software, or other furnishings, if warranted in its judgment, to ensure the health and safety of students and employees. GIA, an independent security service or law enforcement may conduct inspections or searches at any time without notice, including at times when the student is not present. In light of this policy, students should not bring to or store on GIA premises any documents, materials or other item for which they desire privacy. Personal items such as backpacks, purses, totes or other belongings may be subject to search if warranted. Failure to cooperate in any inspection can lead to disciplinary action, up to and including dismissal from GIA.

Video and Audio Monitoring

Due to the nature of its business, GIA must ensure the integrity and security of its premises and processes, including but not limited to customer service and the handling of valuable customer property. Accordingly, GIA uses both electronic video and audio monitoring in the workplace. The monitored content may include students' personal data, including without limitation video recordings, audio recordings, footage and photographs of students, casual communications near these locations and name or any other personal data revealed in video or audio recordings. We do so on the basis of compliance with a legal obligation or for our legitimate interests to protect our business, locations, workers and other parties. Students should not have an expectation of privacy in any public or work areas (GIA does not monitor restrooms or dressing areas).

Each facility has signage posted in the locations where video and audio monitoring is occurring. Please see Student Privacy Notice at www.GIA.edu/privacy-notice for complete disclosure.

Student Privacy Notice

GIA values the privacy of your personal data. This Student Privacy Notice ("Notice") describes GIA's policies and practices regarding our collection, use and handling of your personal data in connection with your relationship with GIA as an educational services applicant, student, or alumni. For complete disclosure and updates, please refer to the Student Privacy Notice at www.GIA.edu/student-privacy-notice

If you use GIA websites other than as an educational services applicant, student, or alumni, your use of those other GIA websites and any information that you submit to us through those other GIA websites will be governed by the posted GIA website privacy notice.

For complete disclosure and updates, please refer to the GIA Privacy Notice at www.GIA.edu/privacy-notice and to the Student Privacy Notice at www.GIA.edu/student-privacy-notice.

Personal Data Collection, Use and Processing

In connection with your relationship with GIA, GIA collects personal data about you (whether online, in-person, or through other means) from the following sources: directly from you; from our affiliated entities, including our subsidiaries and branch offices; from service providers; from alumni chapters; and automatically as you visit GIA websites.

We use your Personal Data for the purposes described in further detail in the Student Privacy Notice at www.GIA.edu/privacy-notice#student-privacy-notice, including to facilitate your experience with GIA and provide you with educational services and related products. We may share your Personal Data with our GIA Affiliated Entities at www.GIA.edu/affiliated-entities and others as described in this Notice.

Providing your Personal Data is voluntary. Please note, however, that without your Personal Data, we may be unable to provide you with the educational services and related products you request.

Reasonable Accommodation

GIA is committed to ensuring equal access to its programs and activities for qualified individuals, including individuals with disabilities. This includes making reasonable, appropriate and effective modifications in policies, practices and procedures for qualified individuals with disabilities. GIA does not discriminate against individuals with disabilities seeking to apply to its programs.

Requesting accommodation. Students requesting reasonable accommodation must provide documentation of the reported disability along with the Reasonable Accommodation Request Form to the school director. Documentation must be from a professional who is qualified in the testing of the disability. GIA will review the request and inform the student or applicant of its decision in writing.

Confidentiality. All information submitted to or developed by the Institute related to the diagnosis, documentation, or accommodation of a disability is considered confidential. Information is only accessible to and/or shared with GIA employees who have a need to know in order to determine or implement required accommodations.

Providing accommodation. Each circumstance will be considered on an individual basis according to the means, limits and experience of GIA and the request under consideration, at the time of such request. Qualified individuals with disabilities must meet the academic and technical requirements for admission and participation in GIA's education programs and services. Each course requires students to perform particular physical and cognitive tasks. Upon request, GIA is pleased to discuss these tasks with the applicant to evaluate the applicant's potential for success and decision to apply.

Students must continue to meet minimum academic, attendance and behavioral standards as defined in these policies. If a student requests accommodation after being placed on academic advising or probation or is dismissed, the terms of academic advising, probation or dismissal still stand.

Complaint Policy and Procedure

Complaint Policy

GIA takes student complaints seriously. GIA reviews all complaints in a timely, fair and equitable manner. GIA gives all individuals named in a complaint, including students, faculty and staff, an opportunity to respond to the complaint. Students are required to cooperate with GIA representatives during an investigation in which we believe the student(s) may provide relevant information. GIA considers all of the information collected in the decision-making process.

Complaint Procedure

Students should raise concerns as soon as possible so that they can be properly addressed. Students are encouraged to try to resolve any issue or concern by first discussing them with the appropriate school official. If the student is unable to reach a resolution, or in cases where informal resolution is not appropriate, the student may submit a formal complaint.

A formal complaint must be submitted to the school director in writing at bkkschooldirector@gia.edu and contain the basis of any allegation, relevant names and dates and a brief description of the actions forming the basis of the complaint. Copies of available documents providing additional

reasonable and credible information that support the complaint should be included.

The director will provide a written summary of the school's investigation and decision within 10 business days of receiving a formal complaint. If the investigation cannot be completed within 10 business days, the student will be notified that additional time is required.

If the student does not feel the school has adequately addressed the complaint, they may submit their complaint to GIA's Headquarters by emailing the dean of students at deanstudents@gia.edu. The complaint must contain the basis of any allegation, relevant names and dates and a brief description of the actions forming the basis of the complaint. Copies of available documents providing additional reasonable and credible information that support the complaint should be included. The dean will provide a written summary of the school's investigation and decision within 10 business days of receiving a formal complaint. If the investigation cannot be completed within 10 business days, the student will be notified that additional time is required.

If for any reason a person does not feel comfortable directly reporting a complaint as described above, they may report a concern confidentially through GIA's Concern Reporting system at www.GIAwis.ethicspoint.com

Schools accredited by the Distance Education Accrediting Commission (DEAC) must have a written complaint policy and procedure for the purpose of receiving, responding to, addressing and resolving as appropriate, complaints made by students, faculty, administrators or any other person who has good reason to believe the school is not in compliance with DEAC standards and policies. Where issues or educational services, student services, or tuition are concerned, a student complainant must have exhausted all efforts to resolve a complaint with the institution before filing a complaint with DEAC.

Complaints may be submitted to DEAC using the complaint form found at www.deac.org/Student-Center/Complaint-Process.aspx. Written complaints will also be accepted by mail or other form of effective delivery to DEAC, provided they include (1) the complainant's name and contact information (2) the basis of any allegation of noncompliance with DEAC standards and procedures; (3) all relevant names and dates and a brief description of the actions forming the basis of the complaint; (4) copies of any available documents or materials that support the allegations; and (5) a release authorizing DEAC to forward a copy of the complaint, including identification of the complainant(s) to the institution. Written complaints may be submitted to:

Executive Director, DEAC
1101 17th Street NW, Suite 808
Washington, DC 20036 USA
ATTN: Complaints

Non-Retaliation Policy

Threats, other forms of intimidation and retaliation against a student or employee for bringing a complaint of harassment or discrimination or for assisting another in bringing a complaint are prohibited. Retaliation is itself a violation of GIA policy and applicable law and is a serious offense. Acts of retaliation may result in discipline up to and including dismissal or termination.

Animals on Campus

Pets are prohibited at all times, including all facilities.

Visitors

Visitors to GIA must register with Reception before entering the building and must be prepared to show current government-issued photo identification. Students are not allowed to let in guests, whether accompanied or not, without prior arrangement or an appointment with Reception. Non-student visitors are not allowed in the classrooms while classes are in session.

Student ID Badges

At the beginning of class, an ID card or badge will be issued to each On Campus student. ID badges must be carried and available at all times while on campus. There is a fee to replace lost badges. ID cards or badges must be returned to Student Services if a student is no longer enrolled before his or her end date.

Lost or Damaged Materials

Students are responsible for the books, equipment, metals and stones available for use in the classroom or loaned to them during the term of their enrollment. Students are charged the replacement cost determined by GIA for any lost books, equipment and stones and the repair costs of equipment that is damaged beyond normal wear and tear; replacing an item is not an option. If the item is found at a later date, the amount will be refunded to the student.

Gifts

GIA's policy is that neither GIA nor staff may receive gifts. GIA understands and appreciates the various gift-giving traditions in all of the countries and cultures where we work. Given the special nature of our work, however, we observe very strict gift-giving policies to avoid a conflict of interest, or even the appearance of one. Visit www.GIA.edu/ethics-compliance to view the GIA Code of Conduct.

Commercial Activities

GIA does not permit students to conduct commercial or business activities on GIA property. The display and sale of merchandise is not permitted.

Copyright Infringement and Peer-to-Peer File Sharing

Students must comply with federal copyright laws. Unauthorized distribution of copyrighted materials, including peer-to-peer file sharing, may subject a student to civil and criminal prosecution in addition to disciplinary action by GIA, up to and including dismissal. See www.GIA.edu/copyright-infringement for the full policy.

GIA's names and logos, like those of most organizations, are valid trademarks and as such may not be used except as described at www.GIA.edu/copyrights-trademarks. The same is true for GIA's copyrighted materials (including all GIA publications, course materials and printed forms), which may be used only by obtaining prior written consent from GIA. For intellectual property usage requests, please email guidelines@gia.edu

Index

A

Academic Integrity [39](#)
Academic Progress Policies [39](#)
Academic Records [44](#)
Accreditation and Licensing [6](#)
Admissions Policies and Procedures [27](#)
Admissions Requirements [27](#)
Advising and Probation [40](#)
Advisory Boards [8](#)
Appeal for Readmission [41](#)
Attendance Policy [37](#)

B

Board of Governors [7](#)

C

Campus Safety and Security [47](#)
Cancellation of Enrollment [33](#)
Career Services [35](#)
Classroom Hours [11](#)
Classroom Policies [38](#)
Classrooms and Equipment [10](#)
Clock Hours [37](#)
Code of Conduct [46](#)
Complaint Policy [49](#)
Contacts [12](#)
Copyright Infringement [50](#)
Credentials Usage Policy [45](#)

D

DEAC [6](#)
Diplomas and Certificates [44](#)
Disability Accommodation [48](#)
Dismissal Policy [41](#)
Dress Code [47](#)
Drug and Alcohol Abuse Prevention [47](#)

E

Education Committee of the Board [8](#)
Education Management [9](#)
Emergency Notifications [47](#)
English-Language Proficiency [28](#)
Executive Management [7](#)
Extended Lab Hours [40](#)

F

Facility [10](#)
Faculty [9](#)
Fees [31](#)
Food and Beverage [34](#)

G

Grading Policy [38](#)
Grading System [38](#)
Graduate Colored Stones [18](#)
Graduate Diamonds [20, 26, 16](#)
Graduate Gemologist [14](#)
Graduation Requirements [42](#)
Grievances [49](#)

H

Health Care and Insurance [34](#)
History of GIA [5](#)
Homework Policy [38](#)
Hours of Operation [11](#)
Housing [34](#)
How to Apply [28](#)

I

International Student Advising [34](#)

L

Lab Classes [24](#)
Leave of Absence [40](#)
Legal Name Change [44](#)
Library and Learning Resources [35](#)
Lost or Damaged Materials [50](#)

M

Make-Up Hours [37](#)
Make-Up Work [38](#)
Mission Statement [5](#)

N

Name Change [44](#)
Non-Retaliation Policy [50](#)
Notice Concerning Transferability of Credits and Credentials Earned at Our Institution [30](#)

O

On Campus Programs [13](#)

Orientation [37](#)

P

Payment Due Dates [31](#)
Payment Methods [29](#)
Peer-to-Peer File Sharing [50](#)
Preferred Name and Pronouns [44](#)
Prior Criminal Offenses [29](#)
Privacy [48](#)
Probation [40](#)
Program Advisory Committee [8](#)
Programs [13](#)

R

Reasonable Accommodation [48](#)
Refund Policy [33](#)
Residency and Applicant Screening [29](#)
Resources [12](#)

S

Satisfactory Academic Progress [39](#)
School Calendar [11](#)
School Closure Dates [11](#)
Smoking on Campus [47](#)
Student Code of Conduct [46](#)
Student ID Badges [50](#)
Student Identity Verification [39](#)
Student Privacy Notice [48](#)
Student Services [34](#)
Student Visas [30](#)

T

Testing Policy [38](#)
Third-Party Payer Information [29](#)
Transcripts [44](#)
Transfer Credit Policy [30](#)
Transportation [34](#)
Tuition and Fees [31](#)

V

Visa Requirements [30](#)

W

Withdrawal of Enrollment [33](#)



CAMPUS LOCATIONS

GEMOLOGICAL INSTITUTE OF AMERICA, INC.

Carlsbad, California – Headquarters
+1 800 421 7250 | admissions@gia.edu | www.GIA.edu

New York, New York – Branch of Carlsbad
+1 212 944 5900 | nyadmissions@gia.edu | www.GIA.edu

AFFILIATED ENTITIES

Bangkok, Thailand
GIA (International) Company Ltd.
+66 2779 6100 | giabkkedu@gia.edu | <https://bangkok.GIA.edu>

Hong Kong, China
GIA Hong Kong Limited
+852 3166 7001 | giahongkong@gia.edu | <https://hongkong.GIA.edu>

London, United Kingdom
GIA England
+44 20 7813 4321 | gialondon@gia.edu | <https://london.GIA.edu>

Mumbai, India; Surat, India - Branch of Mumbai
GIA India Laboratory Private Limited
+91 22 4085 1500 | eduindia@gia.edu | www.GIAindia.in

Taipei, Taiwan
GIA Instrument (Taiwan) Company
+886 2 2771 9391 | giataiwan@gia.edu | www.GIAtaiwan.com.tw